

Adapting Lyduvenai Railway Bridge for Visiting



Vygantas Kilčauskas
Directorate of Zemaitija Protected Areas
Jūrmala, 2026-03-25

Poem about Railway



Poem about Railway



$$2 \times 2 = 4$$

AI refused to illustrate it.

Poem about Railway

Content

1. Where we are – Dubysa regional park

Content

1. Where we are – Dubysa regional park

2. Lyduvėnai Railway Bridge – Long Story
Short

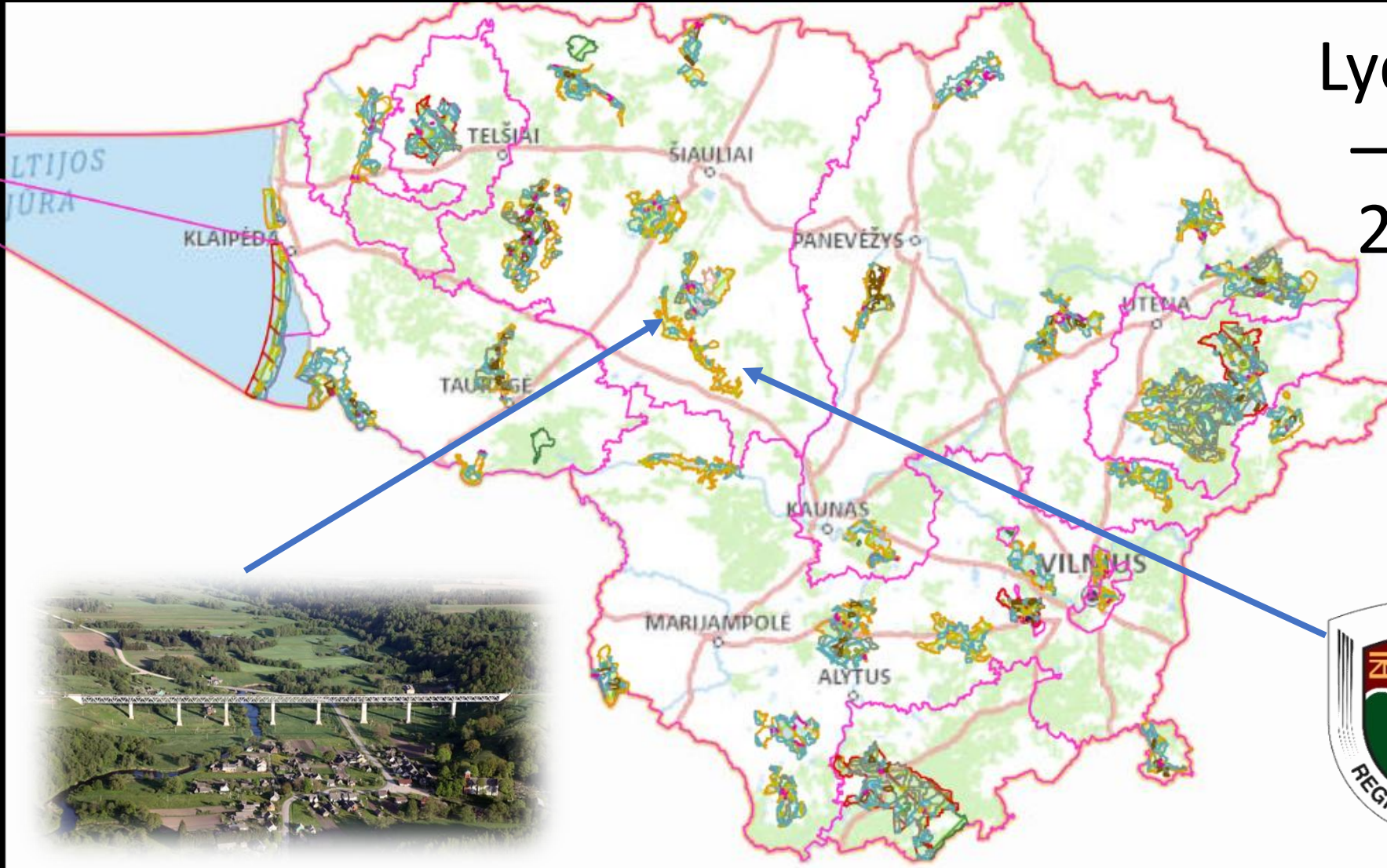
Content

1. Where we are – Dubysa regional park

2. Lyduvėnai Railway Bridge – short story

3. Adapting for visiting – Dreams come true

Location – Dubysa Regional Park, Raseiniai Mun.



Lyduvėnai
– Riga –
231 km





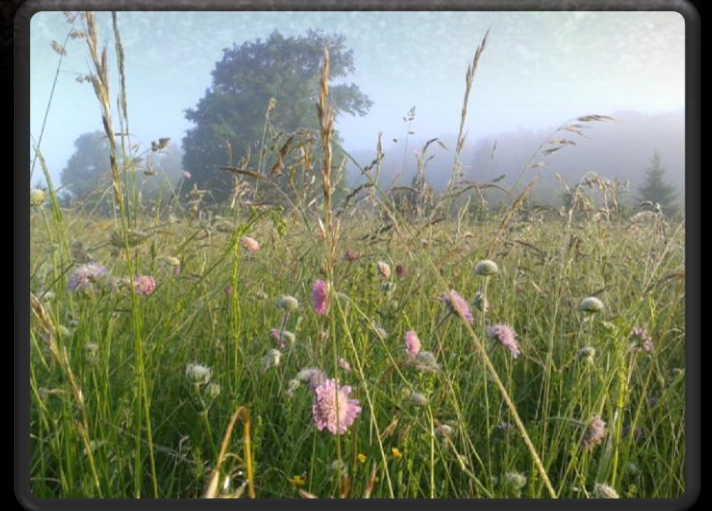
Main Value – The landscape of Dubysa valley





Dubysa Regional Park

Dubysa valley as Natura 2000 area



Lyduvėnai Railway Bridge



Lyduvėnai Railway Bridge

- L – 599 m, H – 42 m
- highest and longest Bridge in Lithuania
- highest and longest Railway Bridge in Baltic
- Lithuanian heritage Monument

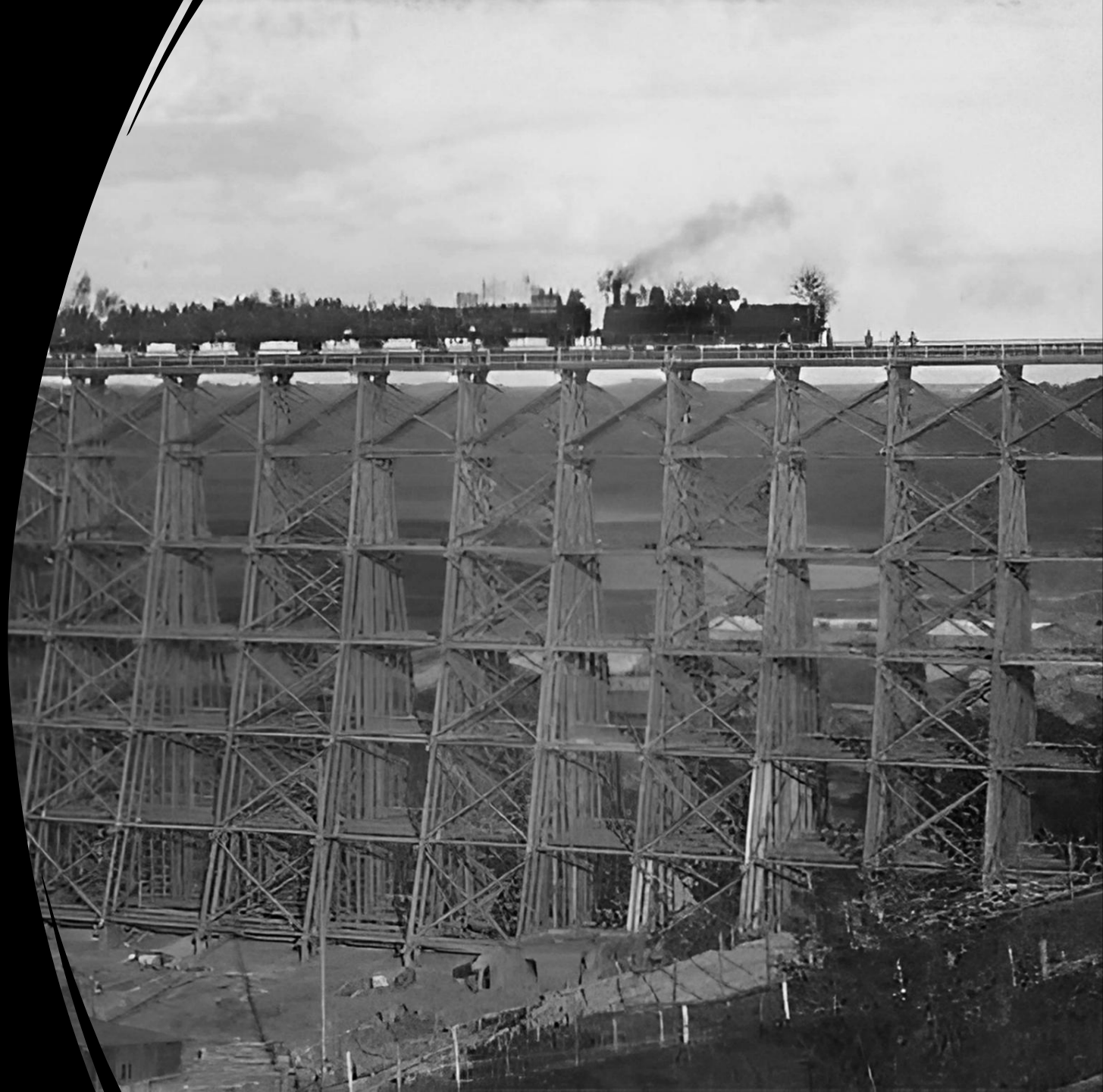


Lyduvėnai 1st Railway Bridge

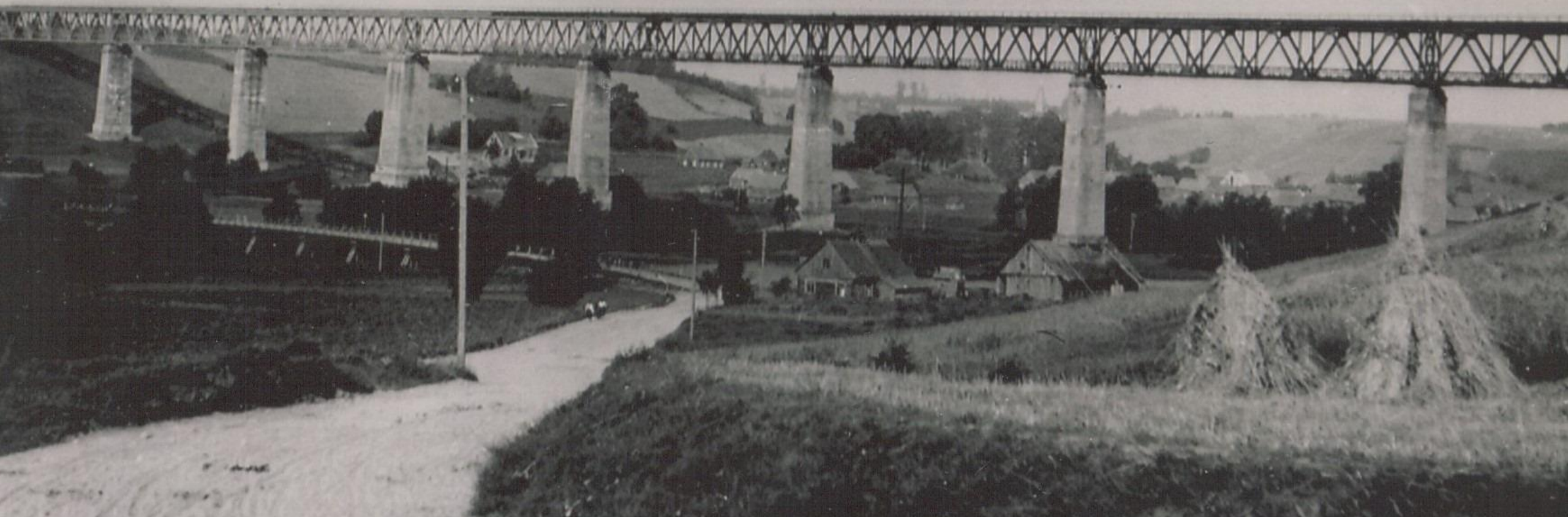


Lyduvėnai 1st Railway Bridge

- 1915.11 – 1916.05 WWI
- Work labor – War Prisoners and local inhabitants
- Unstable and fire-dangerous



Lyduvėnai 2nd Railway Bridge



Lyduvėnai 2nd Railway Bridge

- 1916.10 – 1918.05 WWI
- Blown up in 1944.07.26 WWII



Lyduvėnai 3rd Railway Bridge

- Built in 1944, WWII.
- Building period – 30 days
- Bridge - temporary, wooden
- Work Labor – War Prisoners and local inhabitants
- Unstable and fire-dangerous

NO FOTO



Lyduvėnai 4th Railway Bridge



Lyduvėnai 4th Railway Bridge

- Built in 1952.
- Soviet Occupation and Cold War period

How old is it?



Bridge Fortification



DEVELOPMENT OF PROTECTED AREAS

2004 – 2026

EU



STATE SERVICE FOR PROTECTED AREAS UNDER
THE MINISTRY OF ENVIRONMENT

LT



DEVELOPMENT OF PROTECTED AREAS



First Thoughts 2017



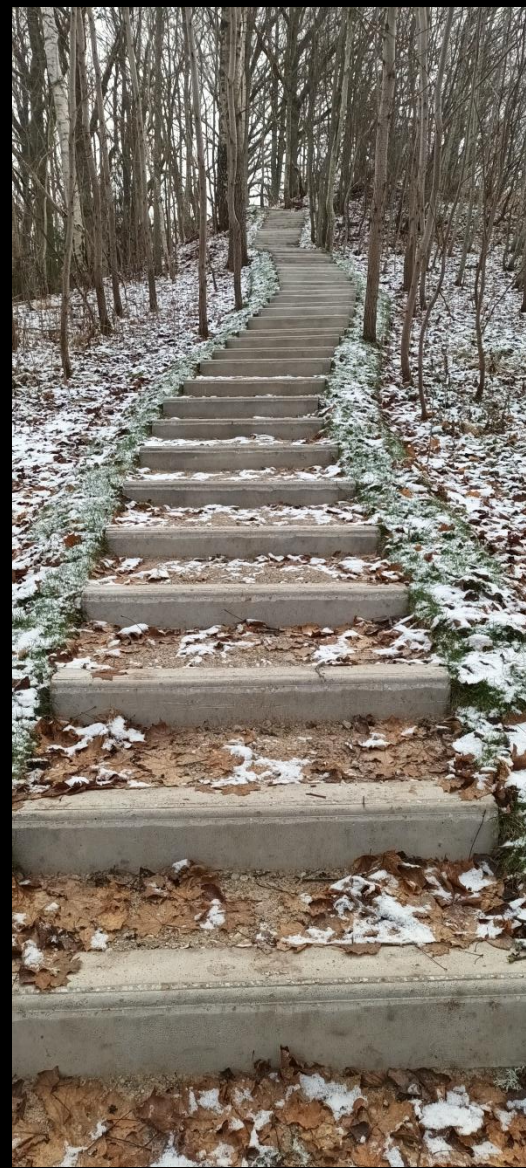


First Attempt



Adapted
service path
below Railway





Importance of National security



Strict rules for Visiting



First excursion – 2023.12.13

Excursion. What you need to know

Excursions
guided-only

Tickets and registration -
<https://tickets.paysera.com>

Registration –
at least 5
days prior

One guided group
≤ 14 visitors

Personal ID required

Excursions' days
III – VII



Excursions. Restrictions





EXCURSIONS ON THE LYDUVĖNAI RAILWAY BRIDGE



► **GET READY FOR A UNIQUE MOMENT**, when you will find yourself 33 meters above a deep valley of the river Dubysa. The 599 meters-long railway bridge will take you from one side of the valley to the other. It will take some courage to cross the bridge, but we guarantee a unique experience that you will never forget.

► **LYDUVĖNAI RAILWAY BRIDGE** is the longest (599 meters) and highest (42 meters) railway bridge in Lithuania. The first one was built in 1916. The current bridge exists since 1952. The Visitors' path is equipped in lower part of the bridge below the railway. You can walk on the bridge only in one direction.

► **THE TICKETS** are only available on tickets service system
<https://tickets.paysera.com>

► **THE STARTING POINT** and parking lot are located at Tilto g. 4A, Lyduvėnai, Raseiniai District Municipality. If you use Google Maps, please enter „Aikštelė tilto lankytojams“.

33
METERS
ABOVE
THE RIVER

TRAINS
ARE ROLLING
OVER
VISITORS'
HEADS

599
METERS
LONG

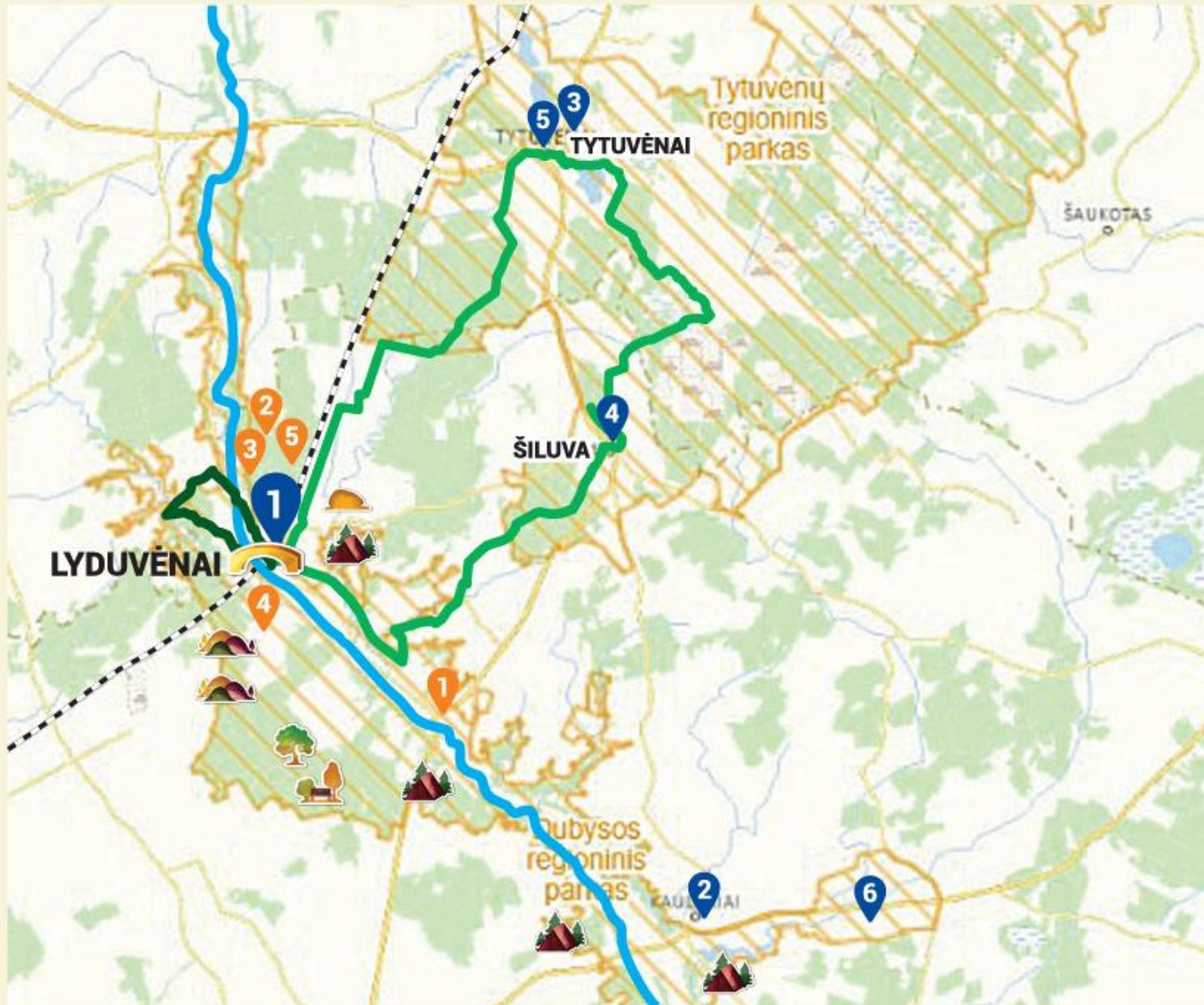
3 km
EXCURSION
ROUTE

IDENTITY
DOCUMENTS
ARE REQUIRED

Travel 

Discover 

Enjoy 



DUBYSOS
REGIONINIO PARKO
PRODUKTAS

Pievų Medus



Integration in tourism routes




ŠILUVA
GYVA PILIGRIMYSTĖ



THE WAY
OF GRACE

More info



The screenshot shows a web browser window with the following elements:

- Address bar: <https://zemaitijosstd.lrv.lt/en/services/excursions-on-the-lyduvenai-railway-bridge/>
- Navigation icons: back, forward, refresh, home, and a search icon.
- Mobile menu icon (three squares).
- Logo: LRV.LT
- Coat of arms of Lithuania.
- Text: DIRECTORATE OF ŽEMAITIJA PROTECTED AREAS
- Breadcrumbs: [Home](#) > [Services](#) >
- Section title: **Excursions on the Lyduvėnai railway bridge**

Iki susitikimo Lyduvėnuose!

See You in Lyduvėnai!

