

# **Project: Forest and Coastal hiking trails' accessibility improvement for different social groups**

EE-LV00013 – Accessible Hiking Trails

**Interreg**

Estonia – Latvia



Co-funded by  
the European Union

# PARTNER: RIGA PLANNING REGION

## ***Pilot actions of the accessibility solutions in the improved sites:***

1) Investment 3.4 - purchase of 2 specially designed outdoor wheelchairs in Carnikava suitable for all trail surfaces and installation of universal design elements supporting accessibility (e.g., specific markings, info plates, beach access mats);

Budget – 19 000,00 EUR

2) Investment 3.5 - 2km part of the Wellness Nature Trail in Jurmala equipped with accessibility elements for people with visual impairments (e.g., info in braille, guided ropes, audio-guide with navigation instructions), as well as signs on the beach to the nearest WC with baby changing table accessible for disabled persons.

Budget – 7 000,00 EUR

# PARTNER: RIGA PLANNING REGION

## *Pilot actions of the accessibility solutions in the*

### *Improved sites:*

Progress:

March 2024

- study trip to Carnikava, with Ādaži municipality tourism specialists, accessibility experts from Apeirons and Nature protection board;

May / June 2024

- consultations with Apeirons about suitable models of the wheelchairs;

Juy / August 2024

- preparation of technical specifications for procurement;

September 2024

- procurement published on 6 September;

October 2024

- offers submission deadline 16 October, evaluation of received offers;

November 2024

- agreement signed with the winner of the tender;

January 2025

- cooperation agreement with Ādaži municipality signed;

January 2025

- wheelchairs delivered;

February 2025

- legal decision of the Development committee of Riga Region about transfer of the equipment to Ādaži municipality free of charge;

- gratuitous use agreement with the Ādaži municipality.

March 2025

- work out agreement for users, internal procedures for maintenance;

April 2025

- testing hike with target groups, publicity.



# March 2024 – study trip to Carnikava

(RPR, Department of Nature Conservation, Apeirons, Ādaži Municipality)





# SELECTION CRITERIA



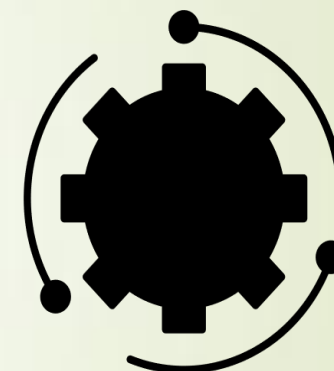
Target group  
coverage



Geographical  
distribution of  
attractions &  
services



Scenic routes and  
their distances



Simplicity in use  
& storage

# SELECTION RESULTS



Van Raam Velo Plus



Joëlette Finisher

# Wheelchair solution

## Nr.1 - VELO PLUS BIKE



- Wheelchair transport bike is designed for transporting people, who can remain seated in their own wheelchair, by cycle.
- The passenger is not required to be transferred between the wheelchair and the cycle.
- VeloPlus lets the co-rider to be wheeled on to the plateau of the cycle easily without having to be lifted. The tilted ramp makes it easy to roll the wheelchair on to the wheel-chair bike and fasten it properly with the wheelchair lock.



# Wheelchair solution

## Nr.1 - VELO PLUS BIKE



### Key features:

- Stable & Comfortable Ride
- Accommodates almost any wheelchair
- Effortless Boarding
- Comfortable
- Safe
- Good contact with passenger
- Multiple options
- Highly Adjustable



# Wheelchair solution

## Nr.1 - VELO PLUS BIKE



### Specification:

- Weight Bicycle: 64 kg
- Max. User weight driver: 110 kg  
Max. User weight passenger incl. wheelchair: 140 (reinforced front frame until 200) kg
- Standard features: Lightning, lock, bell, parking brake
- Max. cycle length: 253 cm
- Max. cycle width: 110 cm
- Boarding height: 28 cm

# Wheelchair solution

## Nr.1 - VELO PLUS BIKE



### A few cons:

- Quite heavy;
- Requires an assistant;
- Does not fold and requires a large storage space;
- High price (EUR 11 095.70)
- <https://tomcatuk.org/product/van-raam-bikes/van-raam-veloplus/>



# Wheelchair solution

## Nr.2 - Joelette Finisher / Sports and nature for all

### Specification:

- Passive wheelchair;
- Weights – 19kg;
- The Joëlette Finisher can support weights of 100 kilos in seat size 48cm and 80kg in seat size 42cm;
- price EUR 5213.89 (48cm);
- <https://www.joeletteandco.com>



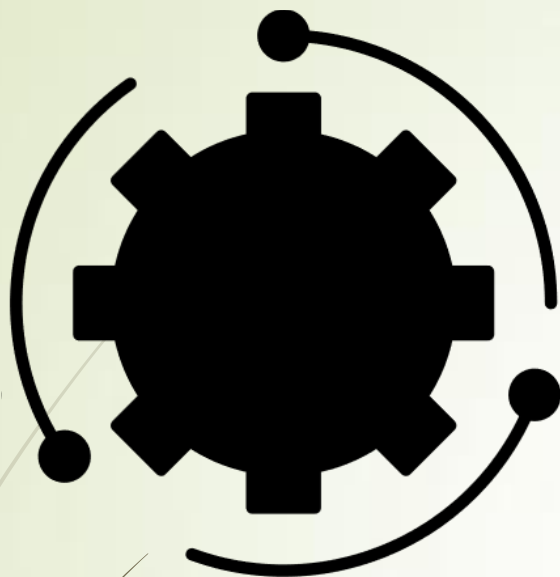
# Wheelchair solution

## Nr.2 - Joelette Finisher / Sport and nature for all



- Suitable for seniors;
- Suitable for different paths and surfaces;
- Easy assembly and storage;





Simplicity in use  
& storage

## INTENTION:

Hiking in woods (e.g. in the Nature Park)

Lightweight

Compact for storage

Reduced effort

Simple to assemble



Target group  
coverage

- Selection maximizes mobility
- Great for families  
where one member of family is with physical disability or a sedentary elderly - too frail to walk/cycle long distances
- Increases choice  
different types of wheelchairs will be able to better cater to various needs





# GEOGRAPHICAL DISTRIBUTION

Relatively  
large distance between clusters  
of tourism attractions and services



Accommodation



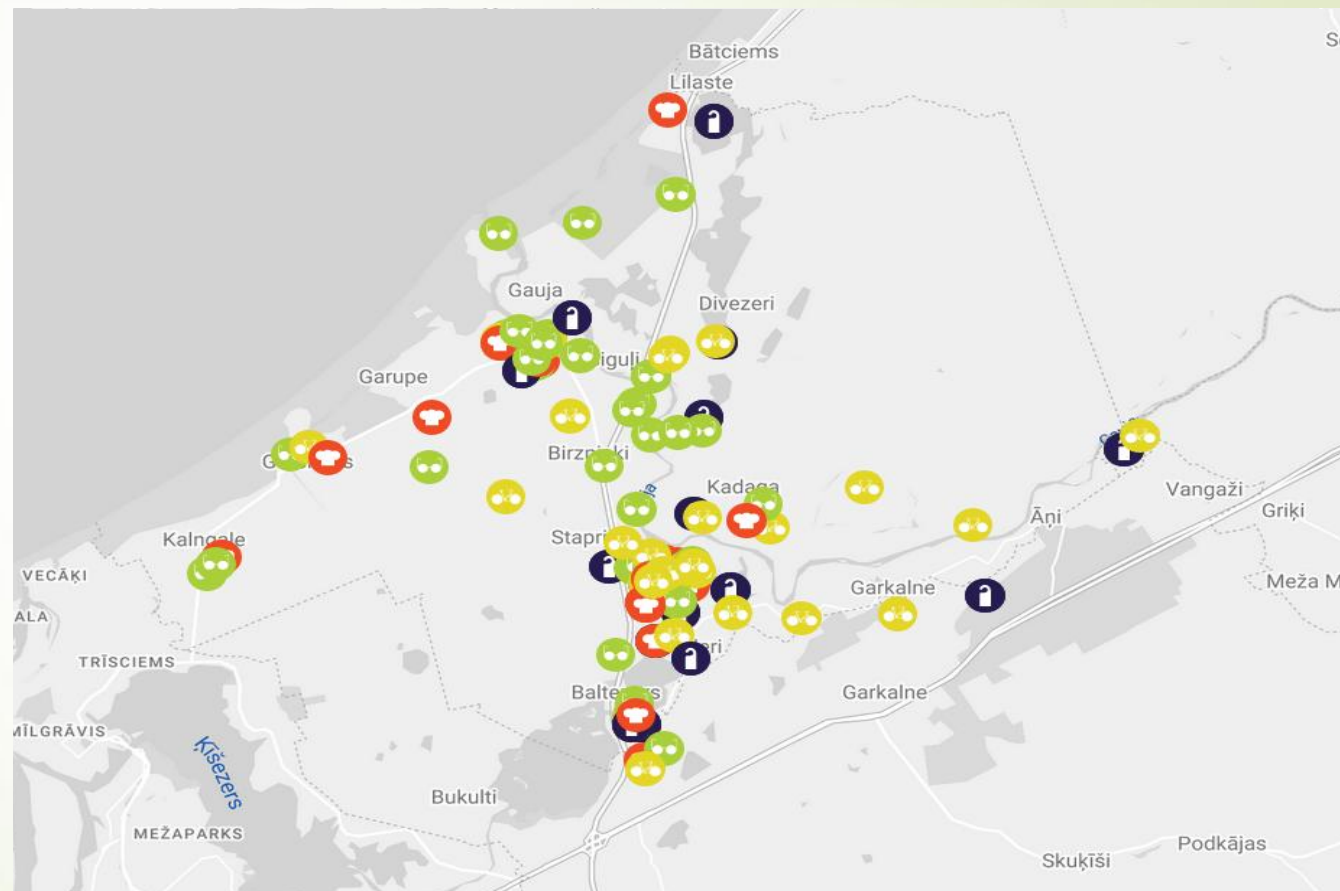
Eatery



Leisure activity



Sightseeing



[turisms.adazi.lv/karte](https://turisms.adazi.lv/karte)

# Wheelchair solution

## COMBINATION OF BOTH FOR CARNIKAVA



### CONCLUSION:

- Both wheelchairs are equipped with GPS (need also data SIM card and connection to mobile network);
- Meets the needs for most target groups – people in wheelchairs and without;
- Each model gives a possibility to access different areas of Carnikava recreation areas for more activities and sightseeing;
- None of the models are currently in use in Latvia.
- No other accessibility equipment was possible in Carnikava – beach mats were not feasible due to distance to possible storage space.

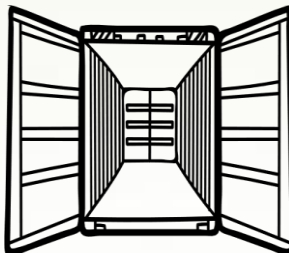


# CHALLENGES



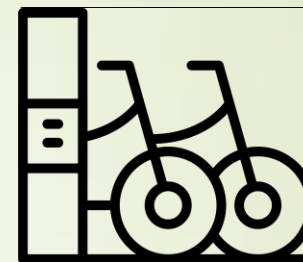
## Security

Intentional damage or theft  
Risk of getting lost



## Storage

Adequate storage space  
in Local History Center



## Rental arrangements

Easy for clients, but in  
line with bureaucratic  
norms

Service availability 24/7?



## Area of service

Geographical limit  
for users of the  
service



## Personnel

Level of knowledge,  
Service impact on  
workload



# SOLUTIONS

CHALLENGE:  
Security



GPS tracker

Insurance

Psychological deterrence

Ability to assist, if user lost

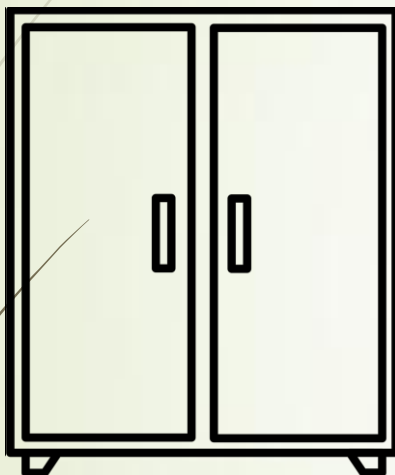
Easier ability to track  
& recover, if device is stolen

Spatial analysis for us - proof  
of concept

Good governance of property

# SOLUTIONS

CHALLENGE:  
Storage



Construction  
of storage unit



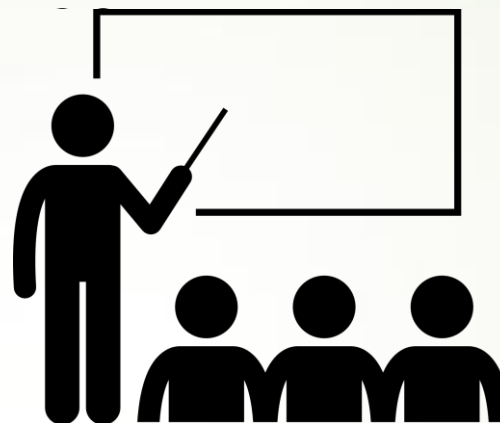
Inside the shed  
of the Local History Center



# SOLUTIONS

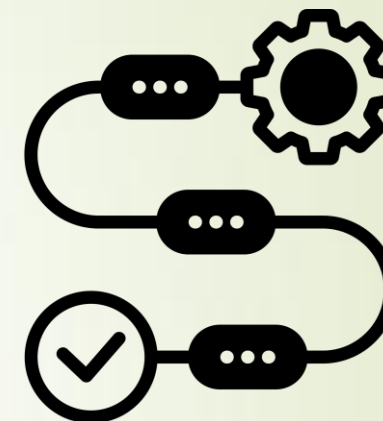
## CHALLENGE

Personnel



## TRAINING

service provision  
minimal maintenance



## OPERATING PROCEDURES

reduce thinking and  
secure faster service

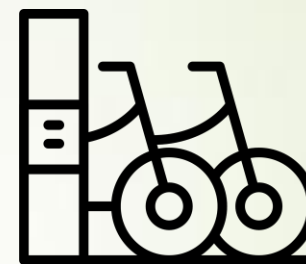


# QUESTIONS FOR FURTHER DISCUSSION



## Area of service

Should this service be allowed outside borders of Ādaži Municipality?



## Rental arrangements

How far we get involved with drafting guidelines of use and rental agreement? Do we let municipality deal with it or ask to be involved?

Who is responsible for any repairs?  
Who purchases air pump, oils for chains etc?  
What happens if the equipment brakes while in use?



RIGA  
PLANNING  
REGION

# THANK YOU!

Laura.bite@rpr.gov.lv?

Rūta Zunde  
senior specialist in tourism matters  
ruta.zunde@adazunovads.lv  
+371 29326285

Jānis Galakrodznieks  
tourism information specialist  
janis.galakrodznieks@adazunovads.lv  
+371 29326285