

Forest and Coastal Hiking Trails' accessibility improvement for different social groups (EE-LV00013 – Accessible Hiking Trails)

5th project partner meeting, February 18-19th, 2025

Asnāte Ziemele, LCTA

Interreg

Estonia – Latvia



Co-funded by
the European Union



Project reporting

The 4th period project report has been verified.

Reporting period start date (DD.MM.YYYY.)

1.11.2024.



Reporting period end date (DD.MM.YYYY.)

28.2.2025.



Reporting period

Period 5, month 17 - 20, 01.11.2024. - 28.02.2025. ▼

The fifth project period ends at the end of February.

The fifth period partner reports are due until 14th of March.

Please place emphasis on Work Package 3 in your partner reports.

On activities, investments, site improvements, pilot testing.

All activities of the period should be described, what is the progress, what is planned, when is it planned to be finished, any obstacles encountered, etc.

Estonia-Latvia Programme

Visibility rules and guidelines

Programme visibility guidelines (updated on 31.05.2025.) -

<https://estlat.eu/en/projects/visibility>



Project work plan

WP1 Joint development of accessibility solutions

WP1 develops 7 accessibility solutions to be implemented on the Coastal Hiking Trail and Forest Trail for the target groups: disabled people (wheelchair, impaired vision, disabled hiking groups), seniors, families with young children, school-aged youth, and people facing language and cross-cultural barrier. Partners will jointly implement the solutions and methodology for their piloting to be carried out under WP3. The WP1 aim is also to ensure training support for tourist service providers.

WP2 Marketing and promotion

The activities are aimed at cross-border cooperation of partner organisations to promote and market improved accessibility of the Coastal Hiking Trail and the Forest Trail as two cross-border hiking products.

WP3 Pilot actions of the accessibility solutions in the improved sites

The aim is to improve 16 sites for accessibility and to pilot the 7 accessibility solutions developed under WP1. A piloting action implies a piloting hike with the target group, collection of feedback, conclusions for finalisation of the solution, input for training materials, and recommendations for replication.

Sites to be improved on the map: [Google Maps](#)

7 accessibility solutions (1. Wheelchair accessibility solutions. 2. Accessibility solutions for impaired vision. 3. Web cam accessibility solutions (seniors, families). 4. Accessibility solutions adapting hiking for families with young children. 5. Self-guided hiking skills for school-aged youth. 6. Adaptation for foreign language and cross-cultural social groups. 7. Guided hikes for groups of disabled people).

Project activities

Activity 1.1

Involvement of the targeted social groups

Project partners have consulted with some organisations representing the targeted groups already during the project preparation. **Representatives of the targeted social groups will be involved in development, piloting and promotion of the accessibility solutions, and in development of training materials.**

Cooperation will take place throughout the project duration. **The social group experts will ensure an active link between their represented organisations and the project team so that the developed solutions are relevant, usable and beneficial for the potential users.** Through social group organisations the project information will be channelled to their members.

Project communication with the social group organisations will take place **via information exchange in meetings, project events, online communication**, etc. The activity will include promotion of the project and Interreg programme for wider public.

Partner input! Which social group organizations you work with and how do you involve them into your activities?

Start period

Period 1, month 1 - 4

End period

Period 9, month 33 - 36

Activity 1.2

Involvement of local communities

Local involvement is needed to ensure sustainability of the accessibility solutions developed by the project through local awareness and acceptance.

The project will address local NGOs, SMEs, local representatives of the targeted social groups, local guides, local municipalities and other members of local communities.

Local meetings will introduce the pilot solutions for different social groups. Site inspections will be done together with representatives of local communities. They will participate in piloting activities. **Ca 12 regional workshops, seminars and similar events in Latvia and Estonia altogether (ca 15 participants in each event)** will draw public attention to accessibility issues for different social groups and will initiate social involvement - **setting up a hiking trail volunteer movement**. This movement will be based on the already existing network of hiking trail enthusiasts. The activity will include promotion of the project and Interreg programme for wider public.

- **Partner input! How many of the workshops / seminars have been organized?**
ERTO November 2024; KPR November/December; Vidzeme one left?
Peipsimaa?
- **Info from KPR about the volunteers**
- **Will the volunteer section be translated to EE?**
<https://baltictrails.eu/en/coastal/volunteer>

Start period

Period 1, month 1 - 4

End period

Period 9, month 33 - 36

Activity 1.3

Development of the accessibility solutions and assessment of their potential uptake

Project partners with the social group experts will specify accessibility solutions for site improvements on the Coastal Hiking Trail and the Forest Trail.

The potential site improvements have been **conceptually formulated by partners** during the project preparation phase based on the observed needs.

Discussions and input from the targeted social groups will lead to the precise specification so that site improvements guarantee such accessibility solutions that are relevant and replicable on a **cross-border scale**. The solutions will be piloted under WP3 and then finalised according to the piloting findings. Each solution will include indications of the actions needed for it to be taken up or **to be upscaled**.

Based on previous experience and local consultations, the project team will revise both trails by sections to assess the potential for up-take of the proposed solutions after they are piloted. **Selected trail sections will be inspected on-site for assessment of their relevance.**

Partner input! Please update the table.

Last update on October 2.

► October 2, 2024, 10:42 AM

● All anonymous users

<https://docs.google.com/spreadsheets/d/1xpiLt2JBmPtq3xyS6yrBtJ98JXFCL1h2CqfpzGaRYQA/edit?gid=1435449887#gid=1435449887>

Solutions 1-7	Cooperation partners:	Meeting dates (on-line) with xxx cooperation partners	Meeting dates (face to face) with xxx cooperation partners	Pilote dates and places (named partners participating)	Who takes pictures, reels, films, GPS (place, track) of the piloting process	Which expert of your social group has been contacted?	Who could take over the experience of the solution	Comments
---------------	-----------------------	---	--	--	--	---	--	----------

Activity 1.3, Development of the accessibility solutions – common presentation by groups (and assessment of their potential uptake)

- 1) **Wheelchair accessibility** solutions to facilitate wheelchair hiking on different surfaces. (*KPR, RPR, PLRK*)
- 2) **Impaired vision.** Accessibility solutions for impaired vision (audio guides, special signposting, brail, etc.). (*RPR, HM, SMG, Peipsimaa, LC, KPR*)
- 3) **Web cam accessibility** solutions for trail current condition visualization before the hiking trip (safe hiking planning for seniors, families with young children). (*VPR (only piloting), Peipsimaa, LC*)
- 4) **Young children.** Accessibility solutions adapting hiking for families with young children (short distance hiking loops on trails, attractive and nature educational games and 3D objects while on a hike). (*VPR, SMG*)
- 5) **School youth.** Self-guided hiking skills for school youth. (*MS, VPR, SMG*)
- 6) **Cross-cultural social groups.** Adaptation for foreign language and cross-cultural social groups. (*MS, LC*)
- 7) **Disabled people.** Guided hikes for people with disabilities. (*ERTO, LC, MS*)

Cooperation between partners google table –

<https://docs.google.com/spreadsheets/d/1xpiLt2JBmPtq3xyS6yrBtJ98JXFCL1h2CqfpzGaRYQA/edit?usp=sharing>

Activity 1.4

Training materials and training

1. Guidelines (LV/EE/EN) with set of criteria (addressing the targeted social groups) for development of accessible hiking services. The final version will include best practice piloting experiences of the accessibility solutions.
So far 4 have been made. 1) Pärnu accessibility solution, 2) Kuldīga audioguide, 3) School youth, 4) Cross-cultural social groups.
2. Practical hints for hikers on how to use the online solutions (weather stations, web cameras, and platforms etc.) for planning a safe hike. (MS PP4)
3. Training video and a methodology on how to guide groups with special needs. (ERTO)
4. Short **8** training videos (to include in the guidelines) recorded with experts from the targeted social groups. (KPR, RPR, 2 VPR, MS, LC + Setu, Peipsi, ERT0 = 5LV + 3EE)
5. Practical training seminars for service providers and guides, with participation of social group experts (3 in EE, 3 in LV, ca 20 persons in each). KPR, RPR, VPR + ERT0, Setu, Peipsi, Hademeste). **How many have been organized?**
6. Accessibility service icons will be designed for the targeted social groups and added on the web to the Coastal Hiking Trail and the Forest Trail. (LC) **COMPLETED**

Start period

Period 2, month 5 - 8

End period

Period 7, month 25 - 28

Activity 1.4

Training materials and training

1) Guidelines (LV/EE/EN) with set of criteria (addressing the targeted social groups) for development of accessible hiking services. The final version will include best practice piloting experiences of the accessibility solutions.

So far 4 have been made. 1) Pärnu accessibility solution, 2) Kuldīga audioguide, 3) School youth, 4) Cross-cultural social groups.

List of all developed solution guidelines + videos on the project's Google Drive –

<https://docs.google.com/document/d/1yRqui5mv7AV6u80YGHbOhs9tFx3uTaij6y4K3NM3Lw/edit?usp=sharing>

1) Pärnu accessibility solution

Guidelines -

EN -

https://drive.google.com/file/d/1ajReJ0xWUc1Mx-kmN8ZYzVwAQIZ0UTQ5/view?usp=drive_link
https://docs.google.com/document/d/1Egi2xp2RVubLrN7x6u4qAWylbj8bsbN/edit?usp=drive_link&oid=110918380440367124284&rtpof=true&sd=true

Video -

<https://www.facebook.com/ParnuLaheRotaryKlubi/videos/481675991023057>

https://drive.google.com/drive/folders/1qCR8HUA68tME98C1QaJOf1_rHh3vWuy?usp=drive_link

<https://www.youtube.com/watch?v=K31VVO2nLME>

2) Kuldīga audioguide

Guidelines -

LV -

https://docs.google.com/document/d/1TtBFzJaUHEIVf4iVR_o0-4LxXSFB-wFWnvC2sH2W10/dit

Video -

<https://youtu.be/Vd8F0CfzVZQ?si=DCt8gBiFpWTTX1mP>

3) School youth

Guidelines -

LV -

https://docs.google.com/document/d/1-Nots5VAep_HH9HmOBQbR1gRn1mPulYWW/edit?usp=drive_link&oid=110918380440367124284&rtpof=true&sd=true

EN -

https://docs.google.com/document/d/1RduTfc8dHk7PsJJYsi3Yrxm_Lr5-jZe/edit?usp=drive_link&oid=110918380440367124284&rtpof=true&sd=true

Video -

<https://youtu.be/26r4xo8f9lw>

4) Cross-cultural social groups

Guidelines -

https://docs.google.com/document/d/1OYZE-dx-B7nRa4EWwCGN936vF5TvTUoT/edit?usp=drive_link&oid=110918380440367124284&rtpof=true&sd=true

Video -

<https://youtu.be/2rUJZgjUdcU>

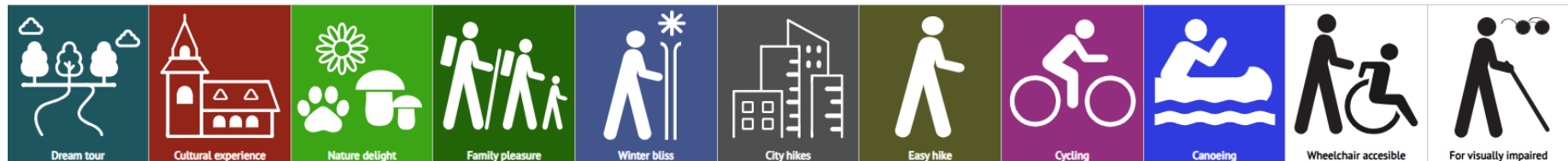
Activity 2.1

Special interest hikes for social inclusion of the targeted social groups

<https://baltictrails.eu/en/forest/specialization>

Full information about both trail special interest hikes types (Dream tour, Cultural experience, Nature delight, Family pleasure, Winter bliss, City hikes, Cycling, Canoeing, Easy hike), their definitions, their symbols, additional specializations - wheelchair accessible, for visually impaired can be found on the baltictrails.eu.

A full list of available specializations for all stages of both trails is available. All available sections of both paths of a specific specialization can be viewed, with descriptions of how they are accessible in specific trail sections. Special symbols have been developed for each specialization.



Baltic Forest Hiking - Cultural experience



Route sections where you can get to know various experiences related to cultural and historical monuments - visit castles, manors, parks, churches, mounds, military heritage sites, historical centers of cities, museums, get to know collections, buy souvenirs and get to know local traditions - customs, food, beverages, tangible and intangible heritage, etc.



Section 1. Old Riga - Baltezers.

Through Riga - UNESCO World Heritage Site

The starting point of Forest Trail in Latvia is located in the heart of Old Riga, the Town Hall Square. The route leads along Kalju Street, passes the Monument of Freedom, through Velmans Garden and along the historic Tērbatas street. Then it arches over the Zemlāni railway station pedestrian bridge and treads into Bīķerīnī and Šnērīnī forests. The Forest Trail winds through Jugla, passes the Latvian Ethnographic...
[more ↓](#)



The historic center of Riga is a UNESCO World Heritage site with a rich array of cultural monuments. Riga hosts the largest number of museums, exhibitions, and various annual events. The city offers a wide range of dining establishments and restaurants, including those serving traditional Latvian cuisine, as well as souvenirs and events related to national and other traditions.



Section 4. Rāmkalni - Sigulda.

Stunning scenery of the ancient valley of Gauja River near Sigulda

Past "Rāmkalni", the Forest Trail wanders up the steep banks of Gauja valley, passes through Gauja village and comes back down. Then it crosses river Lurupe and continues along the bends of river Gauja, passing one of the most spectacular outcrops of the river, the Velna Cliffs, goes up to Kēlarskāts observation spot and circles down to Kēlarskāts, adventure park "Mežakalns" at Kāļškalns and the Sigulda Bobsleigh and...
[more ↓](#)



Sigulda is one of the most popular tourist destinations in Latvia. It is notable for its three medieval castle ruins, manors, Gutman's Cave, the Turaida Museum Reserve, and annual cultural events, including the Sigulda Opera Music Festival and other events and attractions.



Section 5. Sigulda - Līgatne.

In the heart of Gauja National Park

After passing through Sigulda, the Forest Trail follows the River Vēlupīte to Mound Paradise, where a steep...
[more ↓](#)



Līgatne offers a wide range of dining options featuring local products, Latvian cuisine, and beverages produced in Līgatne. The restaurant "Paviru māja" has been awarded the Michelin Green Star. Local souvenirs are available at souvenir shops. The Līgatne Paper Factory Village is an industrial heritage site with former production and warehouse buildings, residential barracks, cellars used for storing vegetables, and the Līgatne ferry. Nearby is the secret Līgatne bunker.

Activity 2.2

Hikers friendly sign for accessibility

<https://baltictrails.eu/en/forest/hikerfriendly/map>



HF awarding meetings will take place twice a year in EE and LV online.

Ca 350 services in Latvia and Estonia will be labelled as Hikers' Friendly – accessible.

Total 510. LV = 280. EE = 40. LT = 189.

Baltic Forest Hiking - "Hiker-friendly" providers

Hiker-friendly Provider list Map Professional

Search by name

All specializations All countries 30 Search 510




1 2 3 4 5 ... 17 Next

Campsite "Mikājāni"
"Mikājāni", Papes Ķorpu ciems, Rucavas pagasts, Dienvidkurzemes novads
+371 26759199
mikjanuseta@gmail.com
FB: Mikājāņu sēta

Pape TĪP
(1.06-31.08.) Dzintarvēji, Pape, Dienvidkurzemes Municipality.
+371 29134903,
pape@dienvidkurzeme.travel
www.dienvidkurzeme.travel

Campsite "Klajumi"
"Klajumi", Jūrmalciems, Dienvidkurzemes novads
+371 26114601; +371 26212997
www.facebook.com/jumalclemaklajumi/
jumalclemaklajumi@inbox.lv

Campsite "Ērgļi"
"Ērgļi", Bernāti, Dienvidkurzemes novads
+371 29402272, 29295337
www.facebook.com/campingergli/
kempingsergli@gmail.com



Hikers friendly sign for accessibility

EE translation??

New accessibility criteria.

- **Wheelchair accessible**
- **Visually accessible**
- **Children-Friendly**

<https://baltictrails.eu/en/forest/hikerfriendly/prof>

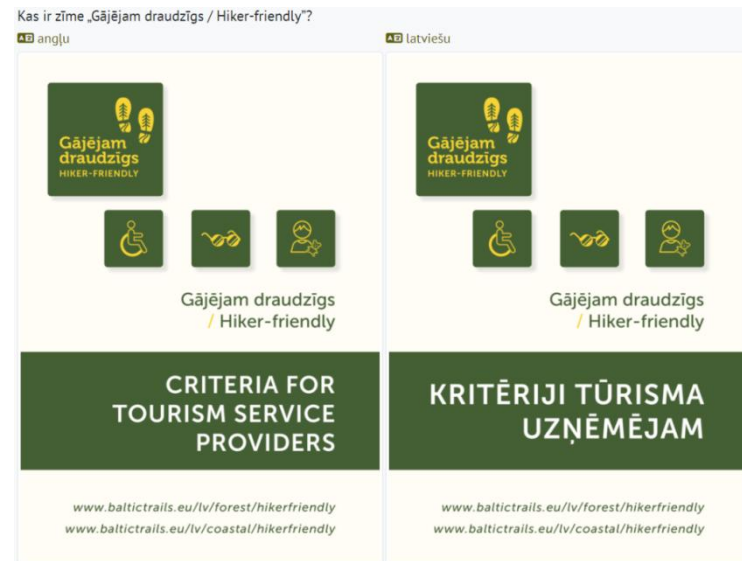
The Latvian application forms for the sign have been updated.

Juris work task -




<https://docs.google.com/document/d/1gkCpLDICVeC0flfmLshAJnbtIKlFlfWp2zycXTukXGY/edit?usp=sharing>

The next meeting of the LV HF commission is scheduled for 25th of March.

The application form indicates that Ca 350 services in Latvia and Estonia will be labeled as Hikers' Friendly – accessible. Solution with previous slide



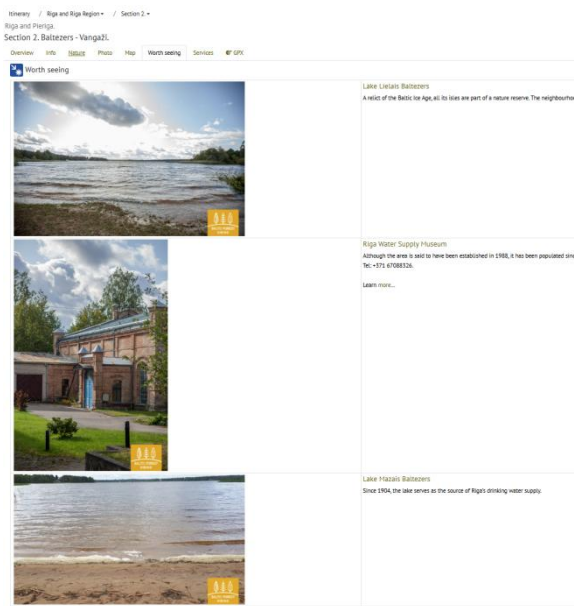
Naktsmitnes - tās, kas ir Latvijā un Igaunijā Jūrtakas un Mežtakas koridorā (tuvumā)				
Jūrtaka https://baltictrails.eu/lv/coastal	Mežtaka https://baltictrails.eu/lv/forest	Ratīnkrēsls (specializācija)	Redze (specializācija)	Bērniem (specializācija)
Nosaukums	Nosaukums			
Viesnīca Helvita		Iekopējam attiecīgajā vietā tikai latviešu valodas saiti (citas valodas nē) Europa City Hotel "Amrita" - Mapeirons		
...				

Tieši tāpat darām ar ēdināšanas uzņēmumiem Ēdināšanas uzņēmumi Latvijā un Igaunijā Jūrtakas un Mežtakas koridorā (tuvumā)				
Jūrtaka https://baltictrails.eu/lv/coastal	Mežtaka https://baltictrails.eu/lv/forest	Ratīnkrēsls (specializācija)	Redze (specializācija)	Bērniem (specializācija)
Nosaukums	Nosaukums			
...				
...				

Activity 2.3 Web site and digital improvements

<https://baltictrails.eu>

- Possibility to arrange tourism objects related to itinerary in the desired order at trail sections
- All linked visitestonia objects are operational again
- Our camera feed hosted on the baltictrails.eu website
- Possibility to sort HF objects by countries and specializations



Tourism objects related to this itinerary section

OrderNbr	Related tourism object -> distance from start
	Lake Lielais Baltezers, Worth seeing. -> 1km
	Riga Water Supply Museum, Worth seeing. -> 2km
	Camping "Leiputrija", Camp site. -> 11km
	Lake Mazais Baltezers, Worth seeing. -> 3km
	Alderī, Worth seeing. -> 5km
	Utaņkalns, Worth seeing. -> 5km
	Gauja-Baltezers Canal, Worth seeing. -> 6km
	Garkalne Lutheran Church, Worth seeing. -> 8km
	Ilķene ferry crossing, Worth seeing. -> 12km
	Historic Road, Worth seeing. -> 12km
	Vangaži, Worth seeing. -> 16km
	Vangaži Christian Parish Church, Worth seeing. -> 16km
	Vangaži Town Museum, Worth seeing. -> 16km
	Guest house "Mazpīpari", Accommodation. -> 10km
	"Pie Brāļa", Food service. -> 17km

Baltic Forest Hiking - "Hiker-friendly" providers

Hiker-friendly

Provider list

Map

Professional

Search by name

Wheelchair accessible

Latvia

50

Search

i

Alūksne TIC

Alūksne, Pils street 25 a, <http://visitalusne.lv/>
More info: +371 25442335 or +371 29130280

i

Valmiera TIC

Valmiera, Rīgas street 10, tel: +371 64207177, 26332213.
www.visitvalmiera.lv/en

i

Kuldīga TIC

Basmīcas iela 5, Kuldīga
Tel.: +371 29534403
Email: tourinfo@kuldiga.lv
WEB: www.visitkuldiga.com

i

Jelgavas reģionālais tūrisma centrs

+371 63005445
Akadēmijas iela 1, Jelgava, LV-3001

Map

Worth seeing

Services

GPX



Visitestonia new version XML -> JSON

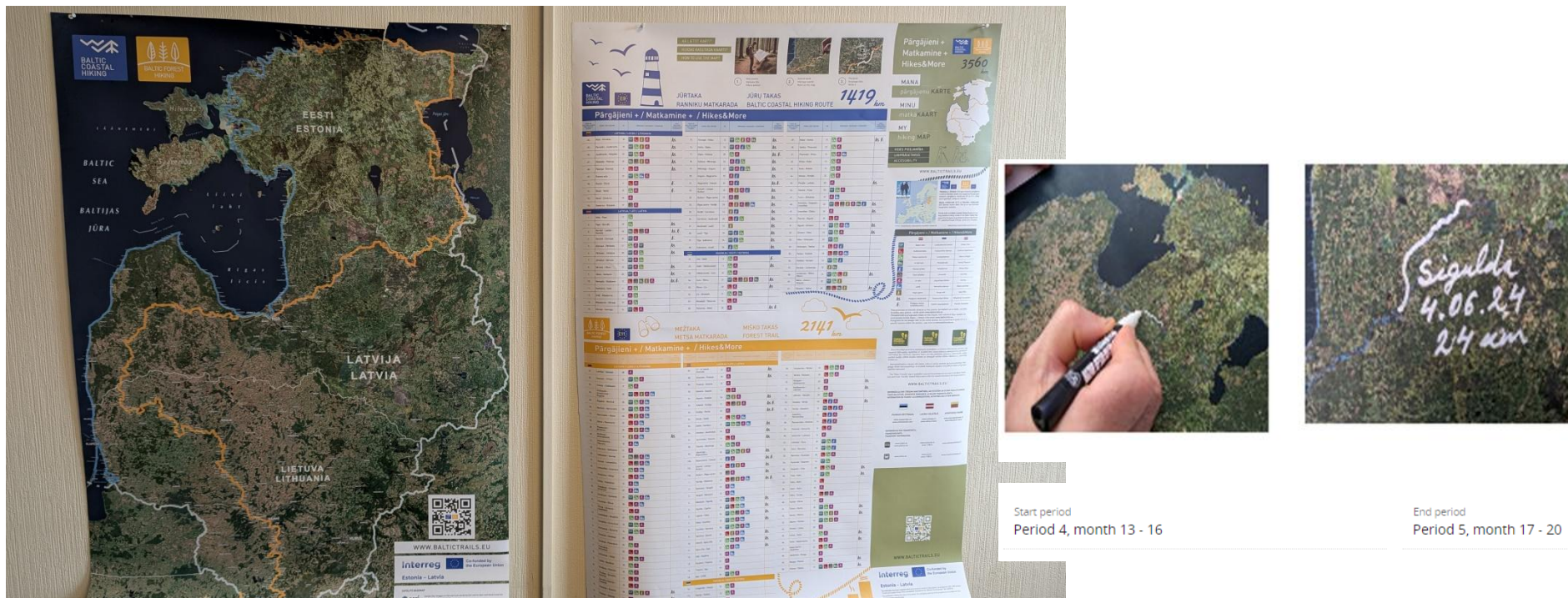
Girls Ziemelis committed on Nov 26, 2024

Activity 2.4, Printed map

Specialised Coastal Hiking Trail and Forest Trail folding poster map.

Design and print files finished. Unfortunately, the printing work has been delayed. More info from Aija.

Will be in A0 size and include all 3 Baltic countries. Will be printed in 20,000 copies.



Activity 2.5, Video reels

- **Short (ca 30 sec – 1min) video reels, 5 in Estonia and 5 in Latvia**, will be made for use by partners in social networks and other online resources.
- They will feature representatives of the **targeted social groups actually experiencing hiking** on the Coastal Hiking and Forest Trail. The aim is to encourage and **demonstrate the accessibility solutions** enabling and supporting the hiking experience.
- The video reels will be **made in the improved sites** on the Coastal Hiking Trail and the Forest Trail:

LV 5 reels?

KPR, RPR – wheelchairs

RPR – impaired vision (Jurmala)

LC +KPR - audioguides (Kuldiga +Kurzeme audio)

VPR – small children/families

LC+MS – school class

EE: 5reels (ERTO, Peip, Set budgetlines)

Content ideas from respective partners until 15.03. – price request (tender?)

– filming May-July

– ready by Aug

Activity 2.6

Communication

The activity will promote the project progress and its results to public at large, stakeholders, targeted social groups:

1. press releases and social media feeds about the project progress and achievements,
2. **media/fam trips**, 1 in EE, and 1 in LV, ca 10 pers. in each trip, to demonstrate accessibility solutions and produce media coverage to draw society attention to hiking accessibility in general.
3. two **national scale tourism events**, one in EE, and one in LV, 70 participants in each. The aim is to induce **uptake of the accessibility solutions** developed and piloted by the project.
4. media interviews, participation in media programs and other relevant PR activities by opportunity.

The Baltic Trails social media

Overview of Instagram Pages

<https://www.instagram.com/meztaka>

<https://www.instagram.com/jurtaka>



Followers: 3420
(+20)

5 posts + 18 stories

9714 views



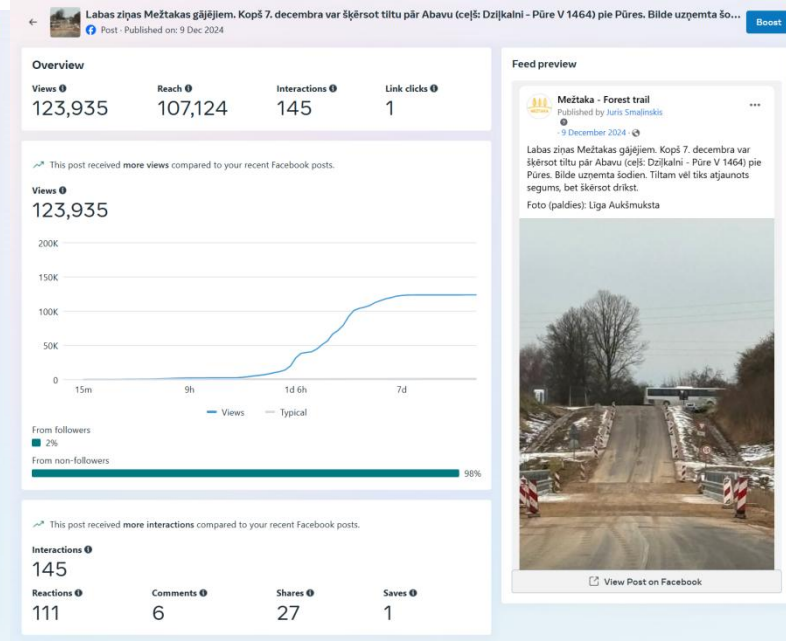
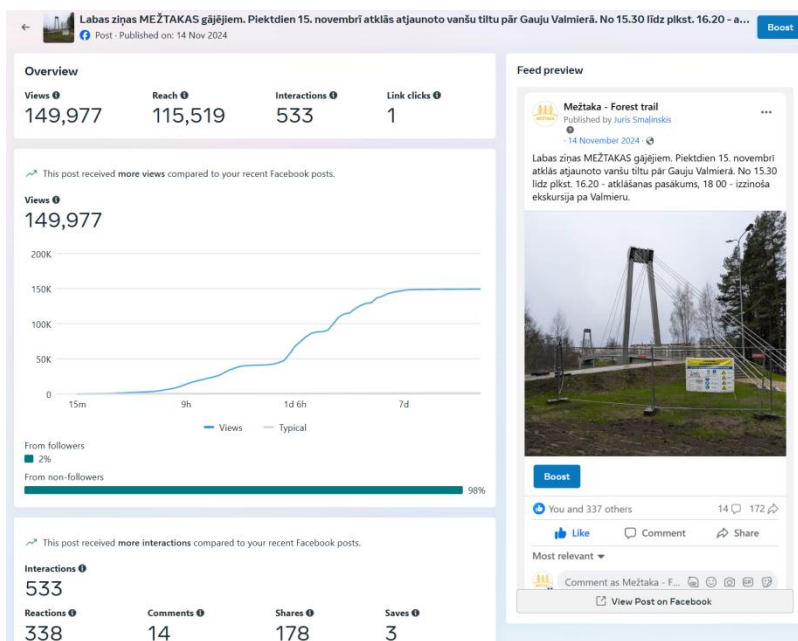
Followers: 3221
(-7)

7 posts + 69 stories

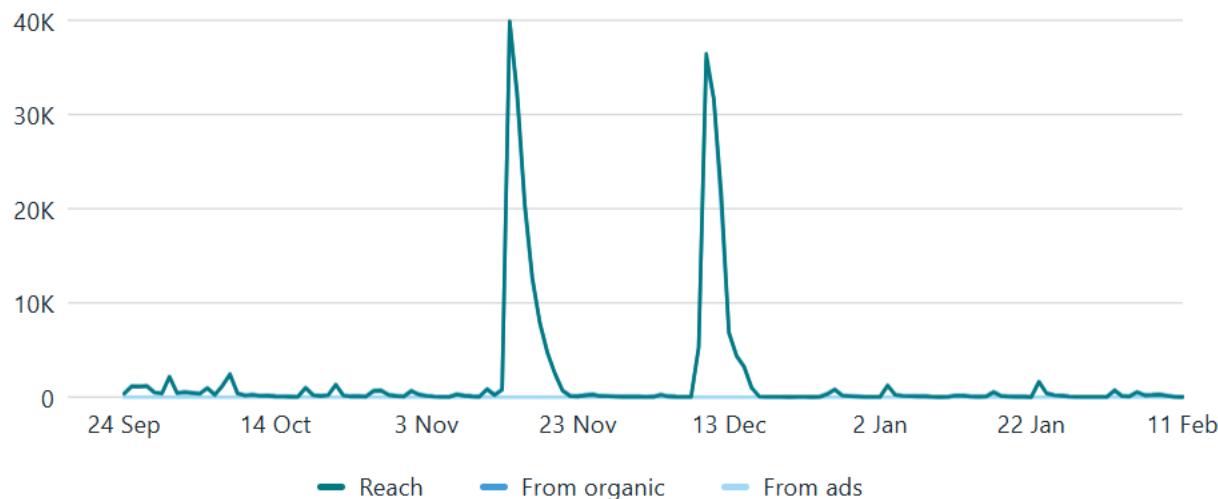
27 2744 views



The scores are not bad, but we can do so much better ;))



tch time
h 28



Reach breakdown ⓘ

24 Sep 2024 - 11 Feb 2025

Total

180,133 ↑ 159.4%

March-Sept.
84 256

From organic

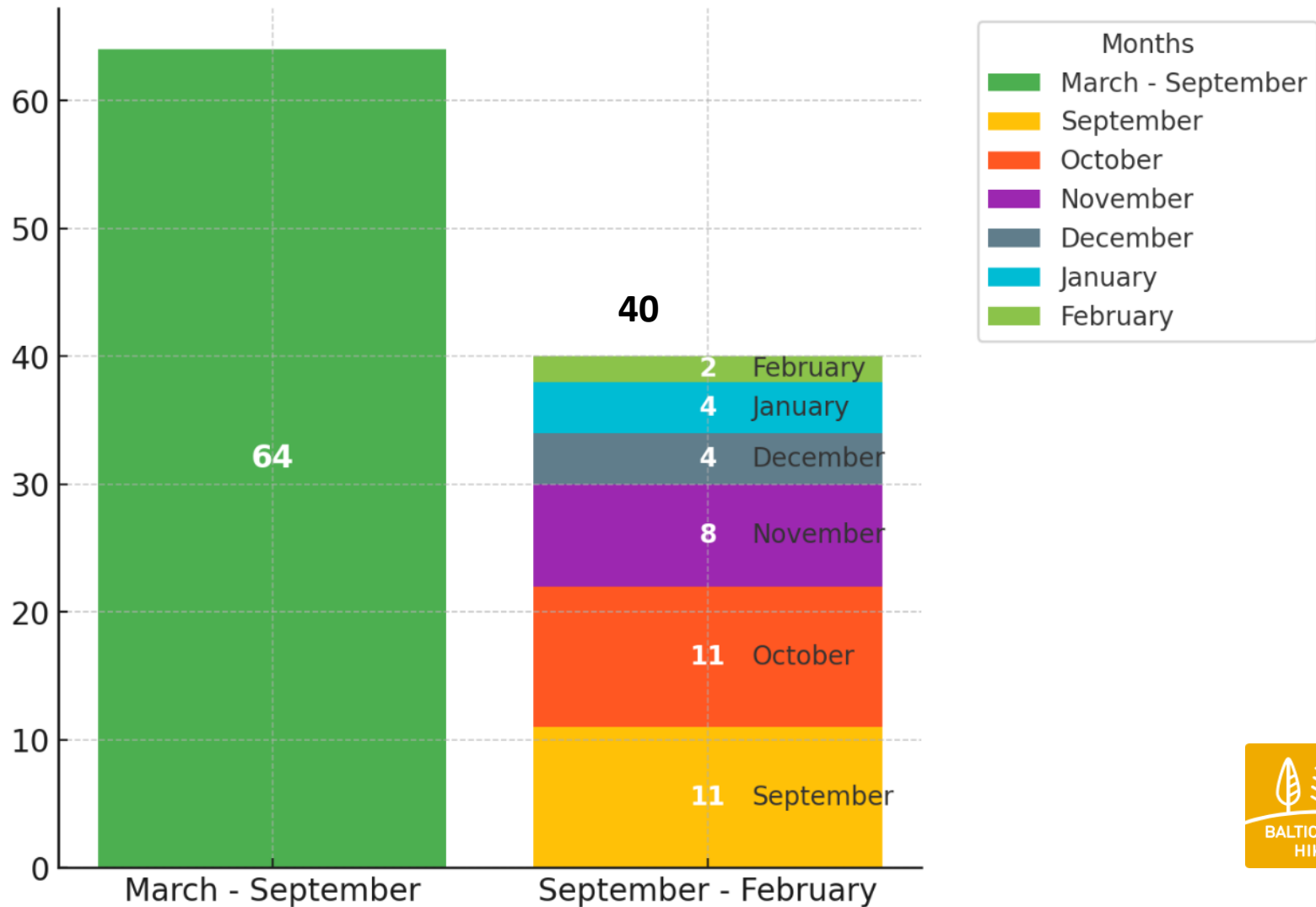
180,133 ↑ 165.3%

From ads

0 0%

The audience reach has **increased** 2.1 times compared to the period from March to September 2024.

Published posts March 2024 – February 2025

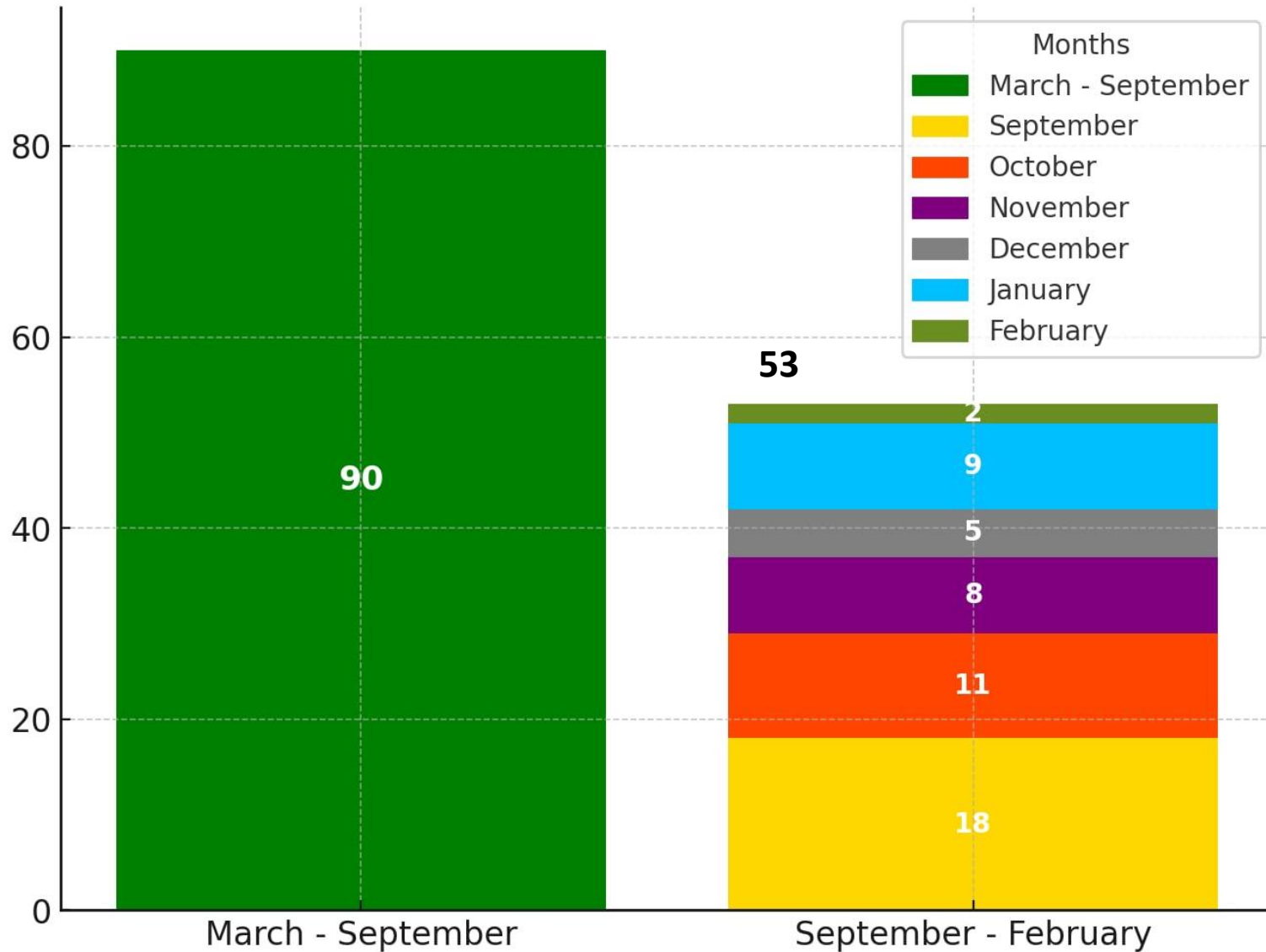


Coastal Hiking



The audience reach has **decreased** 2.7 times compared to the period from March to September 2024.

Published posts March 2024 – February 2025



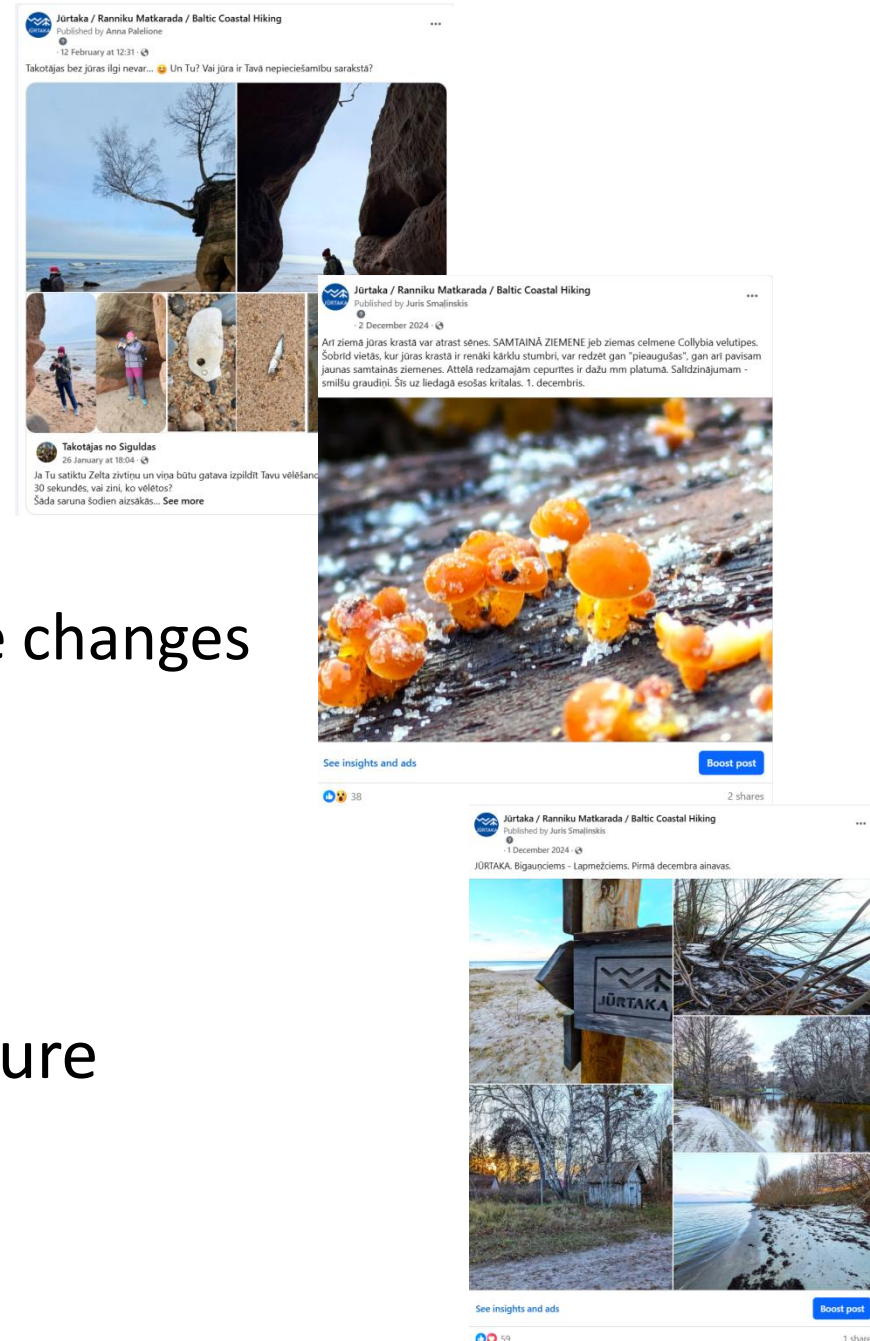
Post types

March - September

1. Hiker's experience
2. Did you know posts
3. Highlights and infrastructure changes

September - February

1. Did you know posts
2. Hiker's experience
3. Highlights and infrastructure changes



Proposal for the period from March to June

- + Each partner posts 1 highlight per month:
 - seasonal hiking routes;
 - hiker's friendly places;
 - a special natural phenomenon (winter bliss, frost, icefalls, etc.);
 - achievements in improving infrastructure.



Activity 2.7

Cooperation with international hiking community

The project final international conference (ca 100-150 participants, incl. ca 50 LV and 20 EE) with participation of ERA will be a 2-day event with a practical discussion session. A pre-study tour will be organised for international participants and/or Estonian stakeholders to demonstrate the solutions and encourage their uptake. The event location is planned in Kurzeme region, Latvia.

Conference topic: practical solutions for accessible hiking, social involvement and inclusion, the role of volunteer movement.

24-25 May 2025 – ERA board meeting in Latvia – combined with project final conference and a public hike

Potential second option. If France refuses to host the ERA General Assembly, then Latvia could host it instead. In that case, the board meeting in May would not be held, but **the GA would take place in Jurnala Oct 3-5, 2025**. In such case, KPR would probably organize a partner meeting and its investment pilot in May.



Draft programme.
Date options: 14.-17.05.25 or 21-25.05.25 or 28.-31.05.25

Tuesday, Arrival day

- Arrival at Riga
- Check-in at the Hotel Villa Anna, Apšuciems, Engure parish, Tukums Municipality, Latvia, ~60 km from Riga

19:00 - 21:00	dinner at the Hotel Villa Anna
---------------	--------------------------------

Wednesday, ERA meeting Day I

Location:	Villa Anna, Apšuciems
10:00 - 15:00	Meeting part 1
> 12:00 - 13:00	Lunch at the Hotel Villa Anna
13:00 - 15:00	Meeting part 2
15:00 - 16:00	Free time

Evening part

16:00	Departure from the Hotel Villa Anna to Jūrmala town (~40 min drive)
16:45 - 17:30	A hiking trail in Jūrmala town suitable for the blind
18:00	Dinner at Grill Restaurant 36.līne
~20:00 / 21:00	Returning to Hotel Villa Anna

Thursday, ERA meeting DAY 2

Location:	Villa Anna, Apšuciems
10:00 - 15:00	Meeting part 1
> 12:00 - 13:00	Lunch at the Hotel Villa Anna
13:00 - 15:00	Meeting part 2
15:00 - 16:00	Free time

Evening part

16:00	Departure from the Hotel Villa Anna to Engure Nature Park
16:45 - 18:00	~ 3km guided walk at Engure Nature Park
18:00-18:30	Stopover at Bērziens to check the infrastructure of the Baltic Coastal Hiking trail
19:00	Dinner at restaurant Albatross (Ķesterciems)
~21:00	Returning to Hotel Villa Anna

Friday, Conference Day

Practical solutions for accessible hiking, social involvement and inclusion, the role of volunteer movement

Location:	Hotel Arkadia, Apšuciems, Engure parish, Tukums Municipality, Latvia
10:00 - 12:00	Conference session 1
> 12:00 - 13:00	Lunch at the Hotel Villa Anna
13:00 - 15:00	Conference session 2

Outdoor activities

15:00 - 16:30	Opening and presentation of improvements to the beach of Apšuciems: <ul style="list-style-type: none">• boardwalk for people with mobility impairments, for parents with kids, seniors.• a sun deck for people in wheelchairs;• 2 floating wheelchairs,• a changing room for people with mobility impairments, etc.
16:30 - 18:30	Baltic Coastal Hiking trail hike from Apšuciems to Klapkalnciems (~4 km) and dinner (bonfire fish soup).
~19:00	Returning to Hotel Villa Anna

Saturday, Public Hike

Location:	Villa Anna, Apšuciems
10:00 - 11:00	Gathering and morning coffee
11:00 - 14:00	Hike from Apšuciems to Engure (~14 km)
14:00 - 15:30	Lunch at Engure Port - bonfire soup.
15:30	Returning to Hotel Villa Anna and Riga by organized bus.

Activity 2.8

Promotion items

Promotional items (e.g.: T-shirts, cups, flags, banners, flyers, leaflets, etc.) will be produced to support social inclusion - for distribution in project events such as hiking piloting, the cross-border hikes and other with participation of hiking volunteers and the targeted social groups.

Baseball caps developed by PP2 KPR.

PP4 MS are still working on their promotional item - hiking socks.



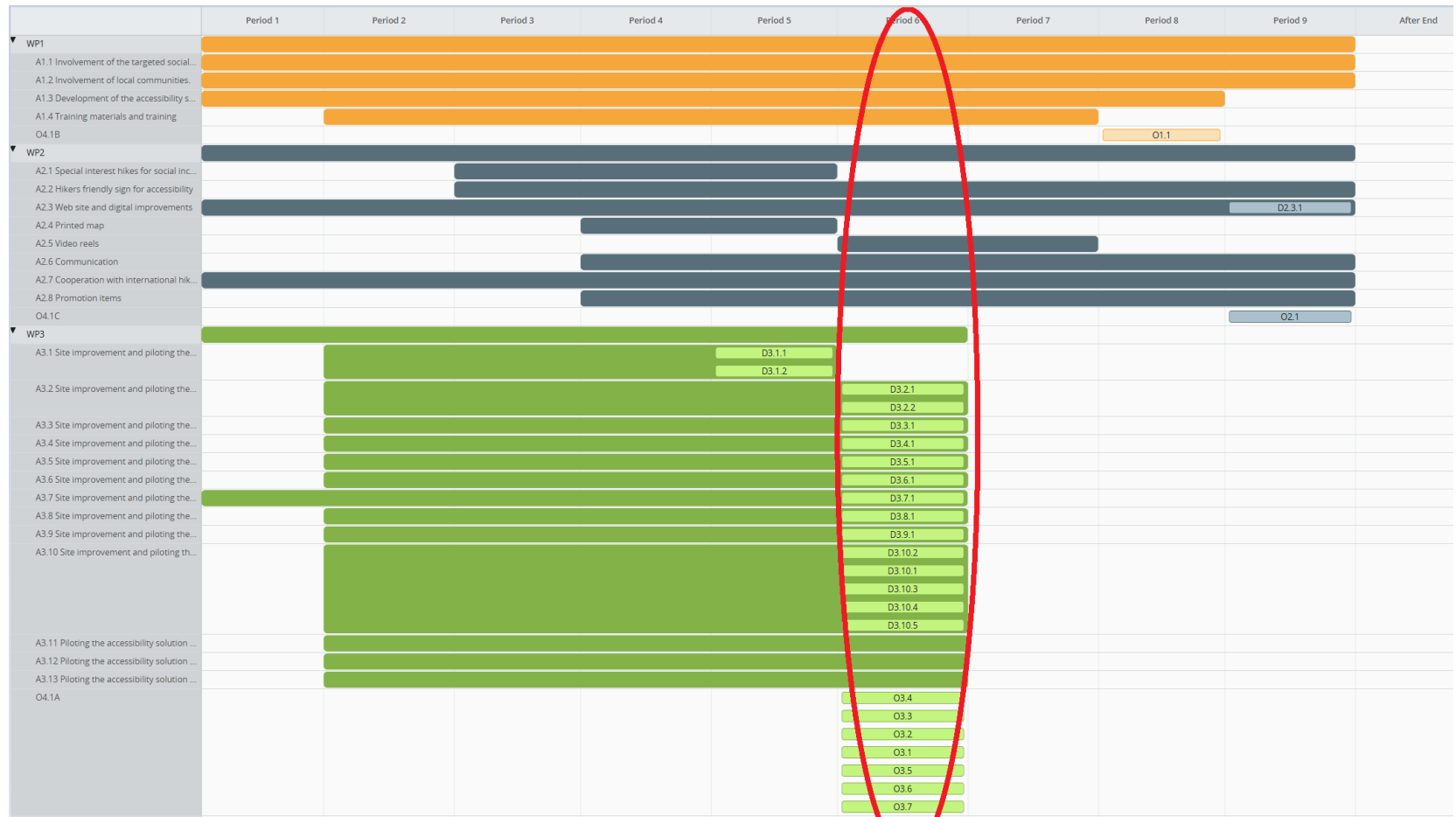
Start period
Period 4, month 13 - 16

End period
Period 9, month 33 - 36

WP3

Pilot actions of the accessibility solutions in the improved sites

The project application indicates that all WP3 activities, investments and pilot testing will be completed by the end of **period 6** - 30.06.2025.



Activity 3.1 Site improvement and piloting the accessibility solution No.4 (adaptations for families with children) on the Forest Trail sections #8 "Caunītes-Valmiera" and #12 "Strenči-Spicu tilts".

Title

Site improvement and piloting the accessibility solution No.4 (adaptations for families with children) on the Forest Trail sections #8 "Caunītes-Valmiera" and #12 "Strenči-Spicu tilts".

Start period

Period 2, month 5 - 8, 01.11.2023. - 29.02.2024.

End period

Period 5, month 17 - 20, 01.11.2024. - 28.02.2025.

3-7km hiking loops will be installed improving two sites on the Forest Trail to make hiking more accessible for families with young children, seniors and other groups not fit for long distance hiking but still willing to hike the Forest Trail. To make the hike more attractive for families with children, a digital game for each loop will be developed and installed on the site using informative tablets with QR codes at the start/end points of both loops. The game can be activated only on site and the children will play the game while moving along the loop. Through the digital game children will learn some facts about the forest, hiking, flora and fauna, etc. The trail loops will be marked. The accessibility solution will be piloted with the target group (ca 10 pers. from EE, ca 20 pers. from LV) on the improved site. Investment description is provided in the Investment section of this WP.

Developed by **PP3 VPR**

Running number	Deliverable title	Description	Delivery period
D.3.1.1	<div>Deliverable title</div> Improved site 1 - the Forest Trail section #8.	<div>Description</div> A hiking loop installed and equipped with a game. Accessibility solution 4 (adaptations for families with children) implemented and piloted with the target group on the improved site 1 - the Forest Trail section #8 "Caunītes-Valmiera".	<div>Delivery period</div> Period 5, month 17 - 20, 01.11.2024. - 28.02.2025.
D.3.1.2	<div>Deliverable title</div> Improved site 2 - the Forest Trail section #12.	<div>Description</div> A hiking loop installed and equipped with a game. Accessibility solution 4 (adaptations for families with children) implemented and piloted with the target group on the improved site 2 - the Forest Trail section #12 "Strenči-Spicu tilts".	<div>Delivery period</div> Period 5, month 17 - 20, 01.11.2024. - 28.02.2025.

Activity 3.2 Site improvement and piloting the accessibility solution No. 3. (web cam solutions) on the CH #15 “Saunags-Kolka”/#16 “Kolka-Ģipka” and the Forest Trail #7 “Cēsis-Caunītes”/#8 “Caunītes-Valmiera”.

Title

Site improvement and piloting the accessibility solution No. 3. (web cam solutions) on the CH #15 “Saunags-Kolka”/#16 “Kolka-Ģipka” and the Forest Trail #7 “Cēsis-Caunītes”/#8 “Caunītes-Valmiera”.

Start period

Period 2, month 5 - 8, 01.11.2023. - 29.02.2024.

End period

Period 6, month 21 - 24, 01.03.2025. - 30.06.2025.

Web cams will be installed to stream the real time weather conditions on the trail: 1) by the cape Kolka on the Coastal Hiking route between sections #15 “Saunags-Kolka” and #16 “Kolka-Ģipka”, 2) on the Forest Trail, between sections #7 and “Cēsis-Caunītes” and #8 “Caunītes-Valmiera”, near the guest house “Caunītes”, a Hikers' Friendly tourist service provider. The cameras will be streamed on baltictrails.eu web site. Seniors, families with children and other groups for whom weather might be an obstacle, will be able to check the weather and trail condition and to make sure before the planned hike if the trail is accessible to them, e.g., no ice or mud, no heavy rain or wind. Installation of web cams will improve accessibility and safety of hiking.

Investment description is provided in the Investment section of this WP.

Piloting the accessibility solution No. 3 with a group hike is justified as follows:

- Quality of feedback for improvements.

The hiking trail is very popular, therefore the piloting hike will be open to public to attract different target audience profiles: domestic LV and Estonian participants for cross-border spectrum, families with children in different age groups, seniors in different age groups and with different hiking abilities. The participants will be asked to evaluate, by means of a questionnaire, their experience using the webcam info for planning and preparation (e.g., what to wear, what to bring along), and whether the webcam info has been reliable enough and helped to estimate the real conditions on the trail. This type of data can be obtained only by on-site hike. The feedback data will be used to improve the accessibility solution, and to disseminate the info for uptake.

- Dissemination

Invited participants will be those potentially interested in the uptake of the solution. They will have an opportunity to see how the solution works and ask questions to the project team about webcam technical solutions and exchange experiences. The piloting hike will be featured in our social networks as an innovative social activity.

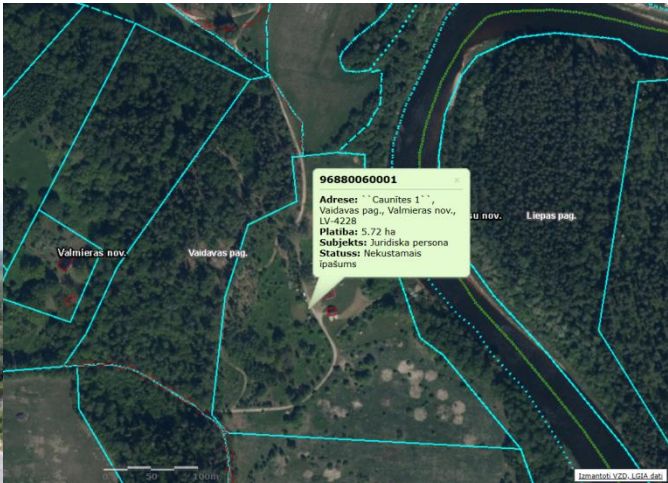
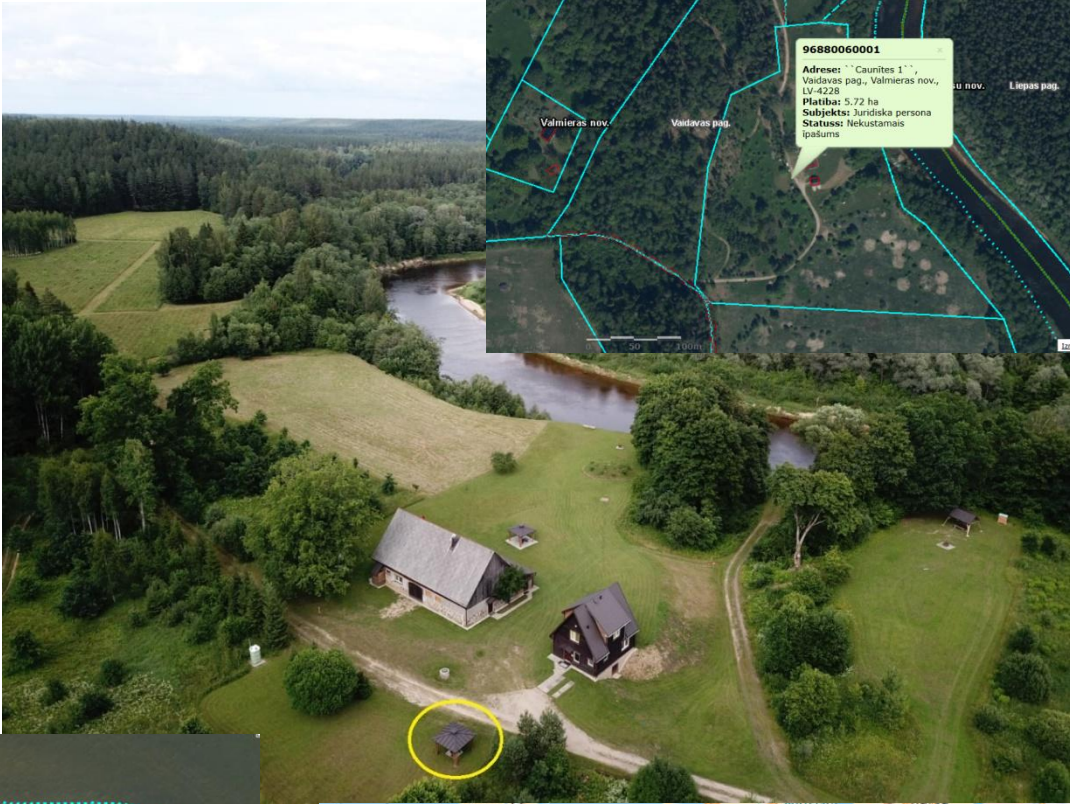
- Cost efficiency

The number of participants in the group does not significantly impact the costs. The costs of announcing the hike, inviting the participants, guide services, preparation and distribution of the questionnaire and data processing, etc. does not significantly grow if there are more participants. We believe it is cost-efficient in terms of the range and quality of feedback data it will bring, as well as for the dissemination of the project and accessibility solution.

Developed by PP3 VPR/LC

D.3.2.1	Deliverable title Improved site 3 - the Coastal Hiking Trail section #15/#16.	Description Web camera installed by the cape Kolka on the Coastal Hiking route between sections #15 “Saunags-Kolka” and #16 “Kolka-Ģipka” and streaming on the baltictrails.eu. Accessibility solution No. 3. (web cam solutions) implemented and piloted with the target group (ca 25 pers. from LV, 5 pers. from EE).	Delivery period Period 6, month 21 - 24, 01.03.2025. - 30.06.2025.
D.3.2.2	Deliverable title Improved site 4 - the Forest Trail section #7/#8.	Description Web camera installed by the guest house “Caunītes” and streaming on the baltictrails.eu. Accessibility solution No. 3. (web cam solutions) implemented and piloted with the target group. Piloting will be combined with activity 3.1. with the same pilot group.	Delivery period Period 6, month 21 - 24, 01.03.2025. - 30.06.2025.

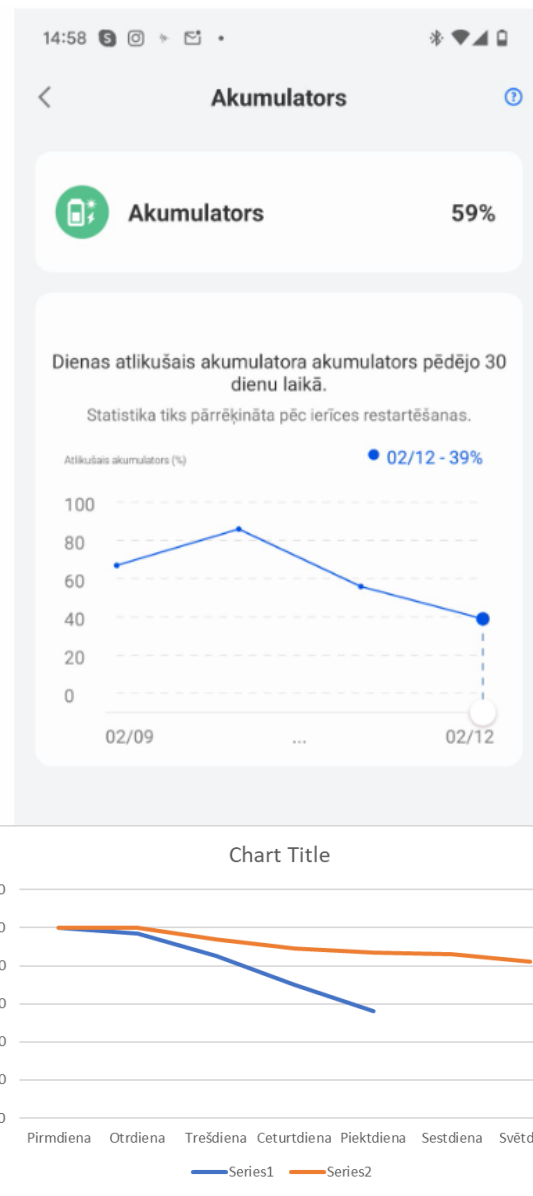
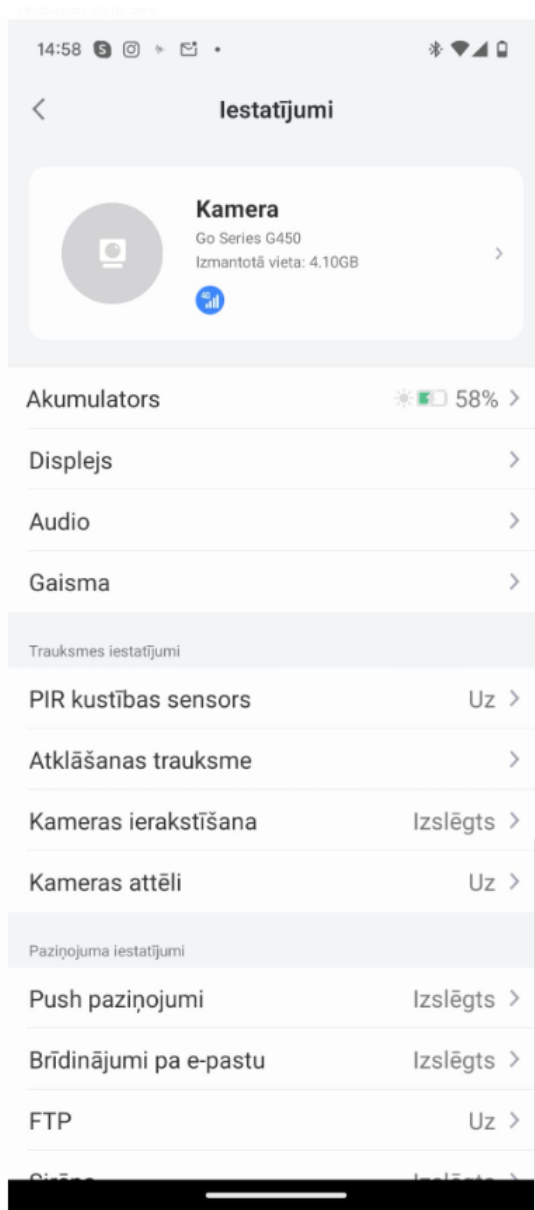
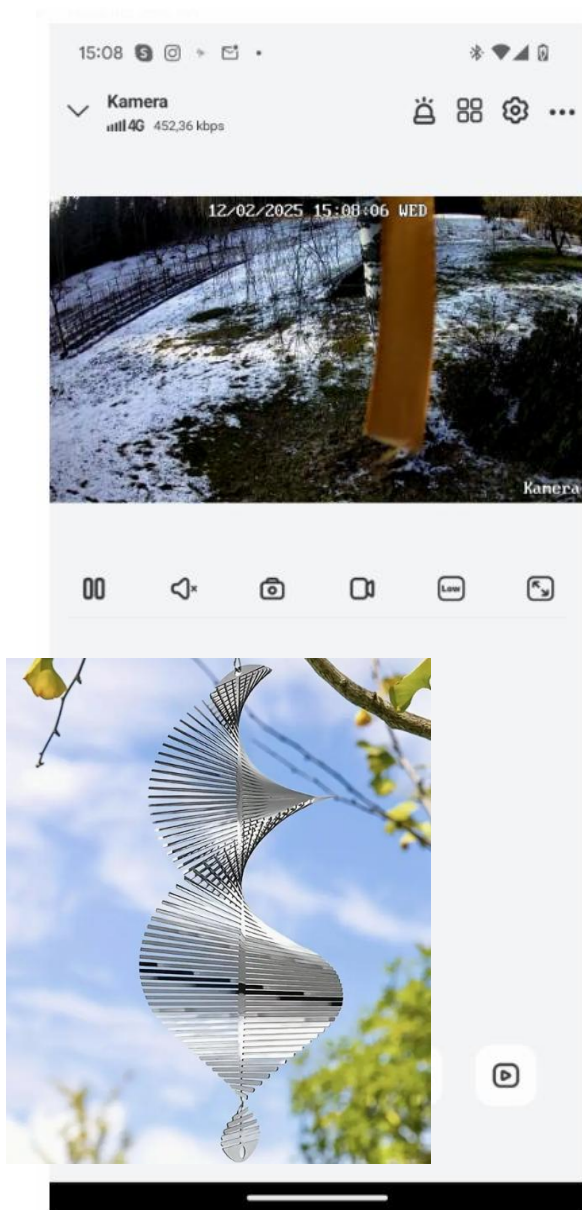
Activity 3.2, web cam solutions on the CH #15 “Saunags-Kolka”/#16 “Kolka-Ģipka” and the Forest Trail #7 “Cēsis-Caunītes”/#8 “Caunītes-Valmiera”.





Live feed for camera photos - <https://baltictrails.eu/en/webcam/c1>





Activity 3.3

Site improvement and piloting the accessibility solution No.1 (wheelchair accessibility) on the Coastal Trail section #20, at Apšuciems-Klapkalnciems.

Title

Site improvement and piloting the accessibility solution No.1 (wheelchair accessibility) on the Coastal Trail section #20, at Apšuciems-Klapkalnciems.

Start period

Period 2, month 5 - 8, 01.11.2023. - 29.02.2024.

End period

Period 6, month 21 - 24, 01.03.2025. - 30.06.2025.

Two specially designed beach wheelchairs with two life jackets will be made available at Apšuciems village for people with mobility issues who would like to experience coastal hiking on the beach. 5km of the beach between Apšuciems and Klapkalnciems villages offer surface that is suitable for hiking experience in beach wheelchairs specially designed to make travelling across sand possible. The accessibility solution will contain the beach wheelchairs, life jackets, one wooden pathway at Apšuciems beach to adapt the trail surface, changing cabin in Apšuciems, sun decks in Apšuciems and Klapkalnciems to make sun bathing possible. The accessibility solution will be piloted with the target group (ca 15 pers. from LV, ca 3 pers. from EE). Investment description is provided in the Investment section of this WP.

Developed by **PP2 KPR.**

Deliverable title

Improved site 5 - the Coastal Hiking Trail section #20.

Description

Beach wheelchairs, life jackets, wooden pathway available for users at Apšuciems village, sun decks installed at Apšuciems and Klapkalnciems. Accessibility solution No. 1 (beach wheelchair) implemented and piloted with the target group on the improved site 5 - the Coastal Hiking Trail section #20.

Delivery period

Period 6, month 21 - 24, 01.03.2025. - 30.06.2025.

D.3.3.1

Activity 3.4 Site improvement and piloting the accessibility solution No.1 (wheelchair accessibility) on the Coastal Trail section #25 “Vecāķi - Carnikava”.

Title

Site improvement and piloting the accessibility solution No.1 (wheelchair accessibility) on the Coastal Trail section #25 “Vecāķi - Carnikava”.

Start period

Period 2, month 5 - 8, 01.11.2023. - 29.02.2024.

End period

Period 6, month 21 - 24, 01.03.2025. - 30.06.2025.

Two specially designed outdoor wheelchairs will be made available at Carnikava local history centre for people with mobility issues to enable coastal hiking experiences on varied surfaces - forest paths, gravel, snow, mud. The solution will allow adaptive hiking on different surfaces on the Coastal Hiking Trail Section #25 “Vecāķi - Carnikava” allowing to use different local alternatives included in this section - the promenade, the beach, the forest paths in the Piejūra nature park. The accessibility solution will contain the wheelchairs that are specially designed for outdoor experiences, and universal design elements for necessary adaptations. The accessibility solution will be piloted with the target group (ca 15 pers. from LV, ca 3 pers. from EE). Investment description is provided in the Investment section of this WP.

Developed by **PP5 RPR**.

D.3.4.1

Deliverable title

Improved site 6 - the Coastal Hiking Trail Section #25.

Description

Outdoor wheelchairs available for users at Carnikava, universal design elements installed. Accessibility solution No. 1. (all surface wheelchair) implemented and piloted with the target group on the improved site 6 - the Coastal Hiking Trail Section #25.

Delivery period

Period 6, month 21 - 24, 01.03.2025. - 30.06.2025.

Activity 3.5	Site improvement and piloting the accessibility solution No.2 (impaired vision) on the Coastal Trail section #21 "Ragaciems-Dubulti"/the Forest Trail section #100 "Bigauņciems-Dubulti".
--------------	---

Title

Site improvement and piloting the accessibility solution No.2 (impaired vision) on the Coastal Trail section #21 "Ragaciems-Dubulti"/the Forest Trail section #100 "Bigauņciems-Dubulti".

Start period

Period 2, month 5 - 8, 01.11.2023. - 29.02.2024.

End period

Period 6, month 21 - 24, 01.03.2025. - 30.06.2025.

Impaired vision accessibility solutions (examples: info in braille, guided ropes, audio-guide with spoken text and navigation instructions) will be installed on a 2km hiking trail (on beach in Jurmala), a local route alternative on the Coastal Trail section #21 "Ragaciems-Dubulti" and the Forest Trail section #100 "Bigauņciems-Dubulti". Accessibility signs pointing to the nearest WC, noting that it is accessible for disabled persons and has a baby changing table will be installed on the beach. The accessibility solution will be piloted with the target group (ca 15 pers. from LV, ca 3 pers. from EE). Investment description is provided in the Investment section of this WP.

Developed by **PP5 RPR**.

Deliverable title	Description	Delivery period
D.3.5.1 Improved site 7 - Coastal Hiking Trail #21/Forest Trail #100	The trail equipped with the selected solutions(info in braille, guided ropes, audio-guide with navigation instructions). The signs Accessible Toilet and Baby Changing installed on the beach in Jūrmala. Accessibility solution No. 2. (impaired vision) implemented and piloted with the target group.	Period 6, month 21 - 24, 01.03.2025. - 30.06.2025.

Activity 3.6 Site improvement and piloting the accessibility solution No. 2 (impaired vision) on the Coastal Hiking Trail section #31 "Ikla-Kabli".

Title

Site improvement and piloting the accessibility solution No. 2 (impaired vision) on the Coastal Hiking Trail section #31 "Ikla-Kabli".

Start period

Period 2, month 5 - 8, 01.11.2023. - 29.02.2024.

End period

Period 6, month 21 - 24, 01.03.2025. - 30.06.2025.

Accessibility solution for people with impaired vision will be implemented and piloted on the Coastal Hiking Trail (#31 "Ikla-Kabli") in Häädemeeste municipality. The solution will include an audio guide for listening on site, information signs and boards for sightseeing and service places adjusted for visually impaired persons, short wooden trails over spots of soft sand, and some resting facilities. The audio guide will highlight the Livonian (Liivi) topic as part of the local cultural heritage as this cross-border area, together with Northern Latvia, is the historical Northern-Livonia.

The accessibility solution will be piloted with the target group (ca 20 pers. from EE, ca 5 pers. from LV). Investment description is provided in the Investment section of this WP.

Developed by **PP8 HM**.

Deliverable title

Improved site 8 - the Coastal Hiking Trail #31.

D.3.6.1

Description

The trail equipped with audio guide, information signs, short wooden trails and resting facilities. Accessibility solution No. 2. (impaired vision) implemented and piloted with the target group.

Delivery period

Period 6, month 21 - 24, 01.03.2025. - 30.06.2025.

Activity 3.8 Site improvement and piloting the accessibility solution No. 4 (adaptations for families with children) at the Petseri Northern Camp on the Forest Trail section #20 Kolodavitsa-Värška.

Title

Site improvement and piloting the accessibility solution No. 4 (adaptations for families with children) at the Petseri Northern Camp on the Forest Trail section #20 Kolodavitsa-Värška.

Start period

Period 2, month 5 - 8, 01.11.2023. - 29.02.2024.

End period

Period 6, month 21 - 24, 01.03.2025. - 30.06.2025.

The former Petseri Northern Camp of the Estonian Defence Forces (established in 1926), is one of the worth seeing sites on the Forest Trail section #20 Kolodavitsa–Värška in Setomaa region. To attract families with children on a hike, attractive objects of the former camp (e.g., a shooting range, artillery camp) will be visualised in 3D format, based on historical photos and showing the objects as they were at the time when the site was functioning as a military training camp. To split the distance and have a rest on a hike with children, a resting place for hikers on the shore of Õrsava lake, and **5 resting benches** along the trail from Õrsava lake to Värška will be installed and **equipped with audio guides introducing the Forest Trail section** and the sites worth seeing on a hike.

The accessibility solution will be piloted with the target group (ca 30 pers. from EE, ca 10 pers. from LV). Investment description is provided in the Investment section of this WP.

Developed by **PP9 SMG**.

Deliverable title	Description	Delivery period
D.3.8.1 Improved site 10 - the Forest Trail section #20.	3D visualisations, small infrastructure equipped with audio guides. Accessibility solution No. 4. (adaptations for families with children) implemented and piloted with the target group on the improved site 10 - the Forest Trail section #20 "Kolodavitsa-Värška".	Period 6, month 21 - 24, 01.03.2025. - 30.06.2025.

Activity 3.9

Site improvement and piloting the accessibility solution No. 2 (impaired vision) in Kurzeme Region on the Coastal Hiking Trail sections#1-#21, and the Forest Trail sections #87-#100.

Title

Site improvement and piloting the accessibility solution No. 2 (impaired vision) in Kurzeme Region on the Coastal Hiking Trail sections#1-#21, and the Forest Trail sections #87-#100.

Start period

Period 2, month 5 - 8, 01.11.2023. - 29.02.2024.

End period

Period 6, month 21 - 24, 01.03.2025. - 30.06.2025.

GPS supported audio guide hosted on available platforms will be produced for part of the Forest Trail section #92 "Snēpele-Kuldīga". The audio guide will introduce the trail section, and will help the users with impaired vision to navigate through part of Kuldīga on the Forest Trail. Audio guides will also be produced for the hiking trail sections in Kurzeme: 21 records on the Coastal Hiking Trail and 13 records on the Forest Trail. For these sections, the GPS feature will not be used as the signal is not always reliable in nature areas. The audio guides will provide information in English and Latvian about the respective trail section.

The accessibility solution will be piloted with the target group (ca 30 pers. from LV, ca 10 pers. from EE). Investment description is provided in the Investment section of this WP.

Developed by **LP1 LC** and **PP2 KPR**.

D.3.9.1

Deliverable title

Improved site 11 - Forest Trail section #92, Kurzeme region on both trails.

Description

Part of the Forest Trail trail section #92 equipped with a QR code to start the voice application of GPS supported audio guide. Trail sections in Kurzeme equipped with audio guides. Accessibility solution No. 2. (impaired vision) implemented and piloted with the target group.

Delivery period

Period 6, month 21 - 24, 01.03.2025. - 30.06.2025.

Title

Site improvement and piloting the accessibility solutions No. 3 (web cam solutions) and No. 2 (impaired vision) on the Forest Trail sections #21-30# in Peipsimaa region.

Start period

Period 2, month 5 - 8, 01.11.2023. - 29.02.2024.

End period

Period 6, month 21 - 24, 01.03.2025. - 30.06.2025.

The activity will cover Forest Trail sections in Peipsimaa region. **5 web cameras** will be installed on municipal lands to stream the real time weather conditions on baltictrails.eu web site. **15-17 audio guides** will be installed on the existing Forest Trail signposts in Peipsimaa region. The web cam solutions will be piloted with the target group by using all cameras to access trail conditions and choosing for a pilot hike (ca 30 pers. from EE, ca 10 pers. from LV). **The audio guides installed at the same sites as webcams will undergo testing in a joint pilot action.** The testing reports will be used for improvements, if necessary.

Investment description is provided in the Investment section of this WP.

Justification of the cameras in the improved sites is as follows:

1. Improved site 16 - Forest Trail section #21/22 in Räpina municipality.

The web cam will stream the real time meteorological information from the Mehikoorma village, Räpina municipality in southern Peipsimaa. The weather conditions here are in general similar to the southeast of Estonia.

2. Improved site 15 - Forest Trail section #24 in Luunja municipality.

The web cam will show the water levels in the River Emajõgi and the operation of the local ferry which is the only way to cross the river on this section of the Forest Trail route.

3. Improved site 14 - Forest Trail section #25 in Peipsiääre municipality.

The webcam will show meteorological conditions in the central part of the Peipsi region - on the eastern coast of Lake Peipus. Strong winds are common here, and during the winter, there may be a snow cover. During the summer, the sun shines brightly. The camera will provide visibility of road conditions depending on the weather. This will help seniors and families with children make better decisions about going out in specific weather conditions, as well as choose appropriate equipment - clothing, footwear, etc.

4. Improved site 13 - Forest Trail section #28/29 in Mustvee municipality.

The web cam will show the trail surface on the former narrow-gauge trail line in the surroundings of Avinurme and the weather conditions in the northern part of the Forest Trail in Estonia.

5. Improved site 12 - Forest Trail section #28 at Tiheda, Mustvee municipality.

The web cam will show the situation on the Lake Peipsi – the height and intensity of waves, the trail conditions on the lakeside – its width, relief, surface condition, vegetation. In winter – the presence or absence of show or ice, the weather – clouds or sunshine, etc. The lake landscape is unique and very beautiful therefore it is important to improve its accessibility for the targeted social groups.

D.3.10.1	Deliverable title: Improved site 12 - Forest Trail section #28	Description 1 web cam-weather station installed at Tiheda, Mustvee municipality and streaming on the baltictrails.eu. Accessibility solution No. 3. implemented and piloted with the target group. Audio guides installed. Accessibility solution No. 2. (impaired vision) implemented.	Delivery period: Period 6, month 21 - 24, 01.03.2025. - 30.06.2025.
D.3.10.2	Deliverable title: Improved site 13 - Forest Trail section #28/29	Description 1 web cam-weather station installed in Mustvee municipality and streaming on the baltictrails.eu. Accessibility solution No. 3. implemented and piloted with the target group. Audio guides installed. Accessibility solution No. 2. (impaired vision) implemented.	Delivery period: Period 6, month 21 - 24, 01.03.2025. - 30.06.2025.
D.3.10.3	Deliverable title: Improved site 14 - Forest Trail section #25	Description 1 web cam-weather station installed in Peipsiääre municipality and streaming on the baltictrails.eu. Accessibility solution No. 3. implemented and piloted with the target group. Audio guides installed. Accessibility solution No. 2. (impaired vision) implemented.	Delivery period: Period 6, month 21 - 24, 01.03.2025. - 30.06.2025.
D.3.10.4	Deliverable title: Improved site 15 - Forest Trail section #24	Description 1 web cam-weather station installed in Luunja municipality and streaming on the baltictrails.eu. Accessibility solution No. 3. implemented and piloted with the target group. Audio guides installed. Accessibility solution No. 2. (impaired vision) implemented.	Delivery period: Period 6, month 21 - 24, 01.03.2025. - 30.06.2025.
D.3.10.5	Deliverable title: Improved site 16 - Forest Trail section #21/22	Description 1 web cam-weather station installed in Räpina municipality and streaming on the baltictrails.eu. Accessibility solution No. 3. implemented and piloted with the target group. Audio guides installed. Accessibility solution No. 2. (impaired vision) implemented.	Delivery period: Period 6, month 21 - 24, 01.03.2025. - 30.06.2025.

Developed be **PP10 Peipsimaa**.

Activity 3.11 Piloting the accessibility solution No. 5 (self-guided hikes for school-aged youth).

Title

Piloting the accessibility solution No. 5 (self-guided hikes for school-aged youth).

Start period

Period 2, month 5 - 8, 01.11.2023. - 29.02.2024.

End period

Period 6, month 21 - 24, 01.03.2025. - 30.06.2025.

The implementation of a "learn by doing" approach for planning and executing hikes has the potential to increase accessibility and interest in hiking activities among school-aged youth. This methodology involves the development of a self-guided program for school groups, in which participants aged 18 and over, or accompanied by a parent or supervisor, are able to plan and execute their own hikes. This approach emphasizes on self-reliance as an important quality that can be taught through self-guided events. The methodology includes trail analysis, map reading, navigation, meal planning and catering, will be produced in LV/EE/EN languages, digital format. The piloting site will be selected by the target group (ca 25 pers.) as part of the planning process.

Developed by **PP4 MS**.

Activity 3.12 Piloting the accessibility solution No.6 (adaptation for foreign language and cross-cultural social groups).

Title

Piloting the accessibility solution No.6 (adaptation for foreign language and cross-cultural social groups).

Start period

Period 2, month 5 - 8, 01.11.2023. - 29.02.2024.

End period

Period 6, month 21 - 24, 01.03.2025. - 30.06.2025.

The proposed solution aims to make hiking more accessible for social groups of foreigners temporarily residing in Latvia and Estonia for reasons such as studies, work, or refugee status as well as foreign tourists general. A methodology will be developed to address the practical considerations for reaching these groups and preparing them for hiking, including information on the necessary equipment and gear, the use of public transportation to reach hiking sites, the specifics of rural and nature areas, and the availability of services such as food. The methodology will provide practical hints for hiking tourism organizers and service providers to use when working with this specific social group and will be produced in LV, EE languages in digital format. Pilot testing with a group of ca 25 persons.

Developed by **PP4 MS**.

Activity 3.13 Piloting the accessibility solution No. 7 (guided group hikes for people with disabilities).

Title

Piloting the accessibility solution No. 7 (guided group hikes for people with disabilities).

Start period

Period 2, month 5 - 8, 01.11.2023. - 29.02.2024.

End period

Period 6, month 21 - 24, 01.03.2025. - 30.06.2025.

In cooperation with trained guides, the piloting hike will test the methodology and the result of training events for guides under WP1 on how to guide group hikes for people with disabilities. Pilot testing with a group of ca 20 persons (15 from EE, 5 from LV).

Developed by **PP6 ERTO**.

Next meetings

Next project partner meeting - in Latvia, Kurzeme?

LV:

KPR – pilottest + partner meeting 22.-23. May 2025?;

RPR (1/2 budget) – 3-5 Oct 2025 + ERA GA (possibility)

EE: Setomaa – Feb 2026?



Asnate Ziemele

Ph. +371 29285756

asnate@celotajs.lv

Latvian Country Tourism Association "Lauku ceļotājs"

Kalniciema street 40, Riga, LV-1046, +371 67617600

E-mail: lauku@celotajs.lv; Facebook: Lauku Celotajs

twitter.com/Laukucelotajs