



Lauku Ceļotājs

www.celotajs.lv

Baltic Coastal Hiking trail

Asnate Ziemele, Project Lead partner, president of the association



Interreg
Estonia-Latvia
European Regional Development Fund



EUROPEAN UNION

Baltic Coastal Hiking Project

- Project «Hiking route along Baltic Sea Coastline in Latvia and Estonia» within Estonia – Latvia programme from EU Regional Development Fund
- **Duration:** 01.02.2017.-31.01.2020.
- **8 project partners**



Interreg
Estonia-Latvia
European Regional Development Fund



EUROPEAN UNION

PROJECT PARTNERS



**Financial support of EU programme Interreg
Estonia – Latvia programme : EUR 926 277,
partners contribution: EUR 163 460**



Visual identity

JŪRTAKA
PIEKRASTES GĀJĒJU CEĻŠ

RANNIKU
MATKARADA
BALTIC COASTAL
HIKING
BALTISCHER
KÜSTEN-WANDERWEG

ТРОПА
БАЛТИЙСКОГО
ВЗМОРЬЯ

LV

EE



JŪRTAKA
PIEKRASTES GĀJĒJU CEĻŠ

RANNIKU
MATKARADA

BALTIC COASTAL
HIKING

BALTISCHER
KÜSTEN-WANDERWEG

VIZUĀLĀS IDENTITĀTES
ROKASGRĀMĀTA

Vizuālās identitātes vadlīnijas ir izstrādātas Igaunijas – Latvijas Programmas no Eiropas Reģionāla atbilstības fonda projekta Pārģājienu maršruts gar Baltijas jūru Latvijā un Igaunijā ietvaros.



What is Baltic Coastal hiking?



- **Latvia -Estonia**
- **1200 km**
- Sandy & stony beaches, cliffs & outcrops;
- **700 sights**
- Historic coastal towns, fishermen villages & 2 capitals- Riga , Tallinn
- Complete tranquillity & remoteness <-> areas with cafes, pubs & souvenir shops

coastalhiking.eu

celotajs.lv

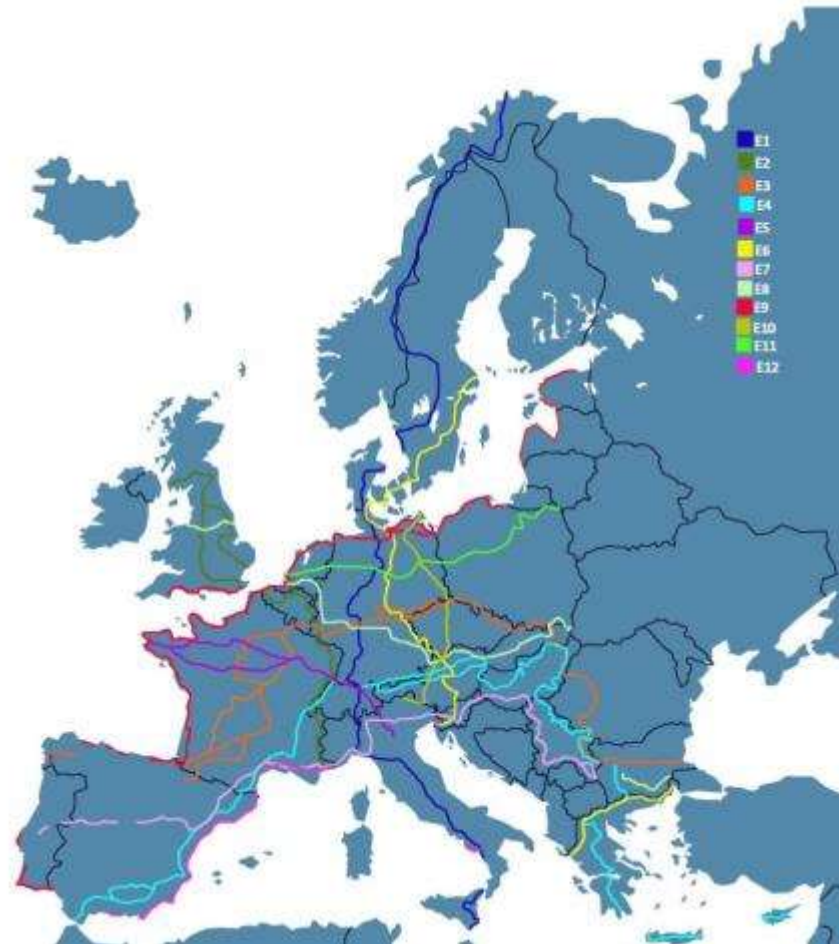
Cooperation with European Ramblers Association

E-paths - Europe's walking trails



ERA·EWV·FERP

<https://www.era-ewv-ferp.org>



ERA·EWV·FERP

49th Annual Conference
Echternach, Luxembourg
#ERA2018



www.celotajs.lv

celotajs.lv

Baltic Coastal hiking trail – northern part of the E9 path



celotajs.lv

Route marking



Infrastructure



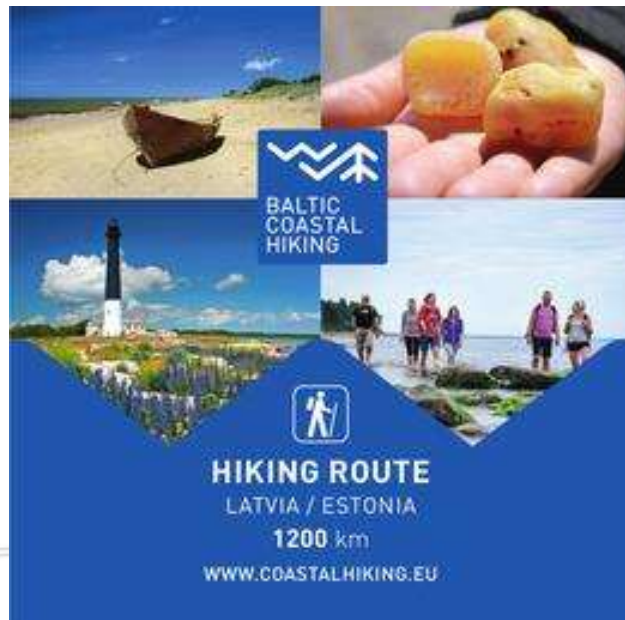
Involving service providers: handbook, network, study tours, workshops



Printed materials:

>>> Baltic Coastal Hiking tourist brochure

- The brochure splits Baltic Coastal Hiking route in 8 stretches.
- Available in languages: Latvian, English, German, Estonian, Finnish (RU as PDF)



ITINERARY OF THE BALTIC COASTAL HIKING ROUTE

1200 km, part of the European long distance hiking route E9
8 sections, any part of the itinerary can be chosen for a hike
40 days, a daily hike of around 20 km.

(JŪRTAKA IN LV) IN LATVIA: Nida – Liepāja – Ventpils –
Cape Kolka – Jūrmala – Rīga – Saulkrasti – Anšlī

1	THE GREAT WAVE SEA	270 km	day 1-15
2	LITTLE WAVE SEA	115 km	day 16-20
3	JŪRMALA AND RĪGA	84 km	day 21-26
4	THE VIDZEME COAST	110 km	day 27-37

(RANNIKU MATKARADA IN EST) IN ESTONIA:
Ikla – Pärnu – Virtsu – Lihula – Haapsalu – Paldiski – Tallinn

5	PÄRNU TOWN AND FISHING VILLAGES	228 km	day 31-41
6	MATSALU NATIONAL PARK AND THE WEST ESTONIAN ISLANDS	160 km	day 42-46
7	HAAPSALU AND VILLAGES OF COASTAL SWEDEN	134 km	day 47-52
8	CLIFFS AND WATERFALLS OF NORTHWESTERN ESTONIA THE LITTORAL OF THE GULF OF FINLAND	158 km	day 53-62

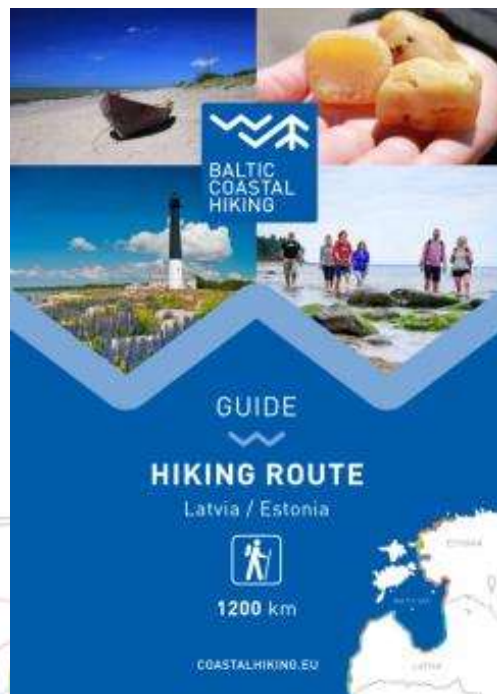
Information, guide, maps: WWW.COASTALHIKING.EU



<https://www.celotajs.lv/en/p/view/Jurtaka> Image

>>> Baltic Coastal Hiking Guide

- 146 pages, 1-day stretches ca 20km/day hikes with map, sights, services;
- Available in languages: LV, EE, DE, EN (RU as PDF)



CONTENT

2 COASTAL NATURE
2 SERVICES AND INFRASTRUCTURE
3 HOW TO USE THE GUIDE
3 HOW TO COMPLETE THE BALTIC COASTAL HIKING ROUTE

LATVIA

4 THE GREAT RIVER DELTA DAY 1-15
34 LIPTĀI NĀVIĀS SEA DAY 16-20
40 LUMĀLA AND RĪGA DAY 21-24
88 THE VIDZEME COAST DAY 25-30

ESTONIA

92 KÄRMU TOWN AND FISHING VILLAGES DAY 31-41
96 MATSALU NATIONAL PARK AND THE WEST ESTONIAN ISLANDS DAY 42-54
114 HAAPSAALI AND ISLANDS OF COASTAL SWEDEN DAY 45-53
128 CLIFFS AND WATERFALLS OF NORTHWESTERN ESTONIA AND THE LITTONIA OF THE GULF OF FINLAND DAY 55-60
144 USEFUL ADVICE



https://www.celotajs.lv/en/p/view/CoastalHiking_Guidebook

celotajs.lv

...each day is downloadable/printable in web



BALTIC COASTAL HIKING

EN ET LV DE RU

NEWS

COASTAL HIKING

Facts

Practical info

Itinerary

Tours

Event Calendar

Publications

Marketing

MAP

DESTINATION

ABOUT US



Login



Itinerary / Little wave sea / Day 16

Little wave sea

Day 16. Kolka - Ģipka.

Overview Info Photo Map Worth seeing Services

Kolka - Ģipka Along The "Closed Coast"



At Cape Kolka, when turning between the "Great Sea" and the Baltic Sea, the Hiking Route lead through pine trees that are washed kolkhoz, a ship berth and Ēvazi Bluff. Ģipka also has a narrow sandy beach with overhanging rocks. The mouths of small streams of the Siltene National Park was a closed territory for two centuries: it was a frontier zone and a nature reserve.



USEFUL INFORMATION	
	A hard sandy beach, a forest trail next to the pine trees washed into the sea.
	Medium
	You can wade across the brooks, the Medņsilupe River (a bridge around 1,3 km away from the sea) and the Pilsupe River (a bridge 0,3 km away) during low water.
	None.
	In case of strong NE and E winds, the coast may be bathed by the waves in some places. Then it is necessary to choose alternative forest trails. There are no ATMs in Kolka.
	Between the Medņsilupe River and the Pilsupe River a forest road-trail stretches for 6 km alongside the sea.

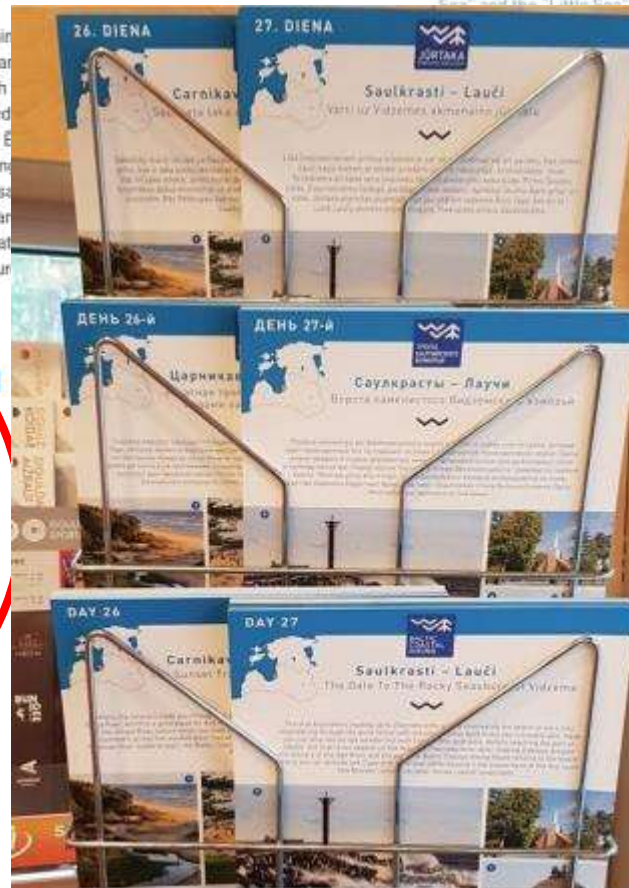


BALTIC COASTAL HIKING

Kolka - Ģipka Along The "Closed Coast"



At Cape Kolka, when turning towards the Gulf, you can clearly see the difference between the "Great Sea" and the Baltic Sea. The first 10 km of the Baltic Coastal Hiking Route lead through the coastal Park, first, past pine trees that are washed into the sea, past the building of a ship berth and Ēvazi Bluff which is surrounded by an unusually narrow sandy beach with black alders. The next section of the trail leading to Ģipka also has a narrow sandy beach with overhanging rocks. The mouths of small streams that are shallow in the Siltene National Park was a closed territory for two centuries: it was a frontier zone and a nature reserve.



USEFUL INFORMATION

	A hard sandy beach, a forest trail next to the pine trees washed into the sea.		None.
	Medium		In case of strong NE and E winds, the coast may be bathed by the waves in some places. Then it is necessary to choose alternative forest trails. There are no ATMs in Kolka.
	You can wade across the brooks, the Medņsilupe River (a bridge around 1,3 km away from the sea) and the Pilsupe River (a bridge 0,3 km away) during low water.		Between the Medņsilupe River and the Pilsupe River a forest road-trail stretches for 6 km alongside the sea.



>>> Baltic Coastal Hiking Tour Manual

- 15 hiking tours for one and multiple days (up to 16 days) in Latvia and Estonia;
- The most interesting, most scenic coastal areas of Latvia and Estonia;
- Every tour includes schematic tour map, provides information about the distance to be covered within a day, level of difficulty, most outstanding sightseeing objects, as well as practical information about the road surface, getting to the starting point and returning from the finish back to the city.
- Available in languages: English, German



TABLE OF CONTENTS

WHAT CAN YOU FIND IN THE HITCHHIKE 1 p.	COASTAL NATURE IN LATVIA AND ESTONIA 3 p. GETTING THERE & AROUND USEFUL LINKS 4 p.	1. THE ROCKY BEACH OF VIDZEME Lauzupils - Svētciems 1 day LATVIA 3 p.	2. THE GREAT BALTIC SEA Kuldīga 1 day LATVIA 7 p.	3. CULTIVE NATIONAL PARK Hulme - Madona 1 day LATVIA 10 p.	4. VINDRĀNĀ NATURE PARK Natura - Engure 1 day LATVIA 11 p.
5. COASTAL NATURE PARK Mārupis - Ķemeri 1 day LATVIA 12 p.	6. A HIKING ROUTE ACROSS THE DIVERSE COASTAL LANDSCAPES OF LATVIA 1 day LATVIA 13 p.	7. ALONG PĀRNĀI BAY Pārnāji 1 day ESTONIA 11 p.	8. WALK THE KIHNU ISLAND Kihnu 1-2 days ESTONIA 19 p.	9. BIRD WATCHING IN NATURAL NATIONAL PARK Kõrve - Pärnu 1 day ESTONIA 20 p.	10. BAYS AND CAPS NORTHS IN THE NORTHWESTERN PART OF ESTONIA 1 day ESTONIA 23 p.
11. AROUND PÄRNŪ PENINSULA Pärnu - Virtsu 1 day ESTONIA 23 p.	12. THE LEGENDARY SUNDRIĀ PENINSULA Sundriā - Ķemeri 1 day ESTONIA 24 p.	13. A HIKING TOUR ALONG THE WESTERN COAST OF ESTONIA AND THE RESORT TOWNS Hulme - Agla - Virtsu 3 days ESTONIA 26 p.	14. GRAND HIKING TOUR ON THE COAST OF LATVIA AND ESTONIA Hulme - Agla - Virtsu 14 days LATVIA/ESTONIA 77 p.	15. WALKING NATURE TRAILS IN LATVIA AND ESTONIA Kuldīga - Pārnāji - Virtsu 3 days LATVIA/ESTONIA 32 p.	GENERAL INFO ABOUT THE COUNTRIES 37 p. MAP OF THE AREA AND EUROPE 38 p.



celotajs.lv

Tour Manual / tours in www

The screenshot displays a web browser with multiple tabs. The active tab is 'coastalhiking.eu/en/c/tours'. The browser's address bar shows the URL 'coastalhiking.eu/g/www/cms/c00012/CoastalHiking_TourManual_en-28-32.pdf'. The page content includes a navigation menu on the left with options like 'NEWS', 'COASTAL HIKING', 'Facts', 'Practical info', 'Itinerary', 'Tours', 'Event Calendar', 'Publications', 'Marketing', 'MAP', 'DESTINATION', and 'ABOUT US'. The main content area features a header with the logo 'Lauku Ceļotājs celotajs.lv' and the title 'Baltic Country Holidays - Latvia, Lithuania, Estonia'. Below the header is a navigation bar with 'Accommodations', 'Tours', 'Worth seeing', 'Map', 'Professionals', and 'About us'. The 'Tours' section is active, showing 'Active tour Individual Estonia No 50165' and the title 'Along Pärnu Bay: Häädemeeste – Pärnu'. The tour details include a photo of a wooden walkway over a wetland, a '2 days' duration, and a description: 'This section of the Baltic Coastal Hiking Route is suitable to hardy hikers who like to travel across uninhabited places. In many places, reeds, floodplains with pastures and wetlands stretch across the Estonian seacoast, which is why the itinerary often leads you along forest and country roads. In the second half of summer you can pick the mushrooms and berries in the coastal forests. Pärnu is a popular resort city with many cafés, live music, SPAs, hotels and a beautiful Old Town.' The page also includes social media sharing options (Like, Share, Tweet) and a search bar on the right.

Baltic Coastal Hiking trail digital

coastalhiking.eu

The image shows a screenshot of the Baltic Coastal Hiking website. The browser tabs include 'Latvian mantojuma pre...', 'Google Maps', 'www.celotajs.lv', 'www.facebook.com', and 'Baltic Coastal Hiking'. The URL bar shows 'coastalhiking.eu/en/calendar/online'. The website features the Baltic Coastal Hiking logo, navigation links for EN, ET, LV, DE, and RU, and a sidebar menu with categories like NEWS, COASTAL HIKING, MAP, DESTINATION, and ABOUT US. The main content area displays a calendar for September 2019 with a 'today' button. Below the calendar is a list of events with columns for Date, Location, and Website.

Baltic Coastal Hiking Calendar of Coastal e

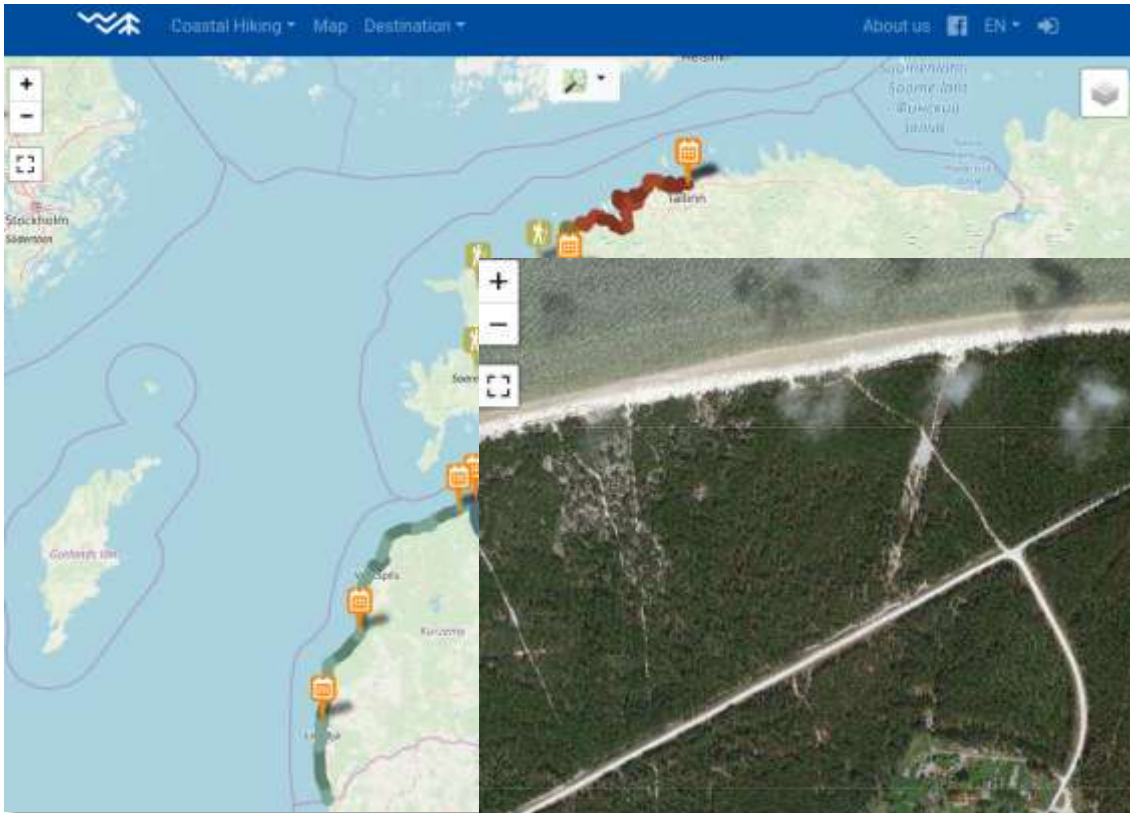
September 2019

W	Mon	Tue	Wed	Thu	Fri
35	26	27	28	29	Summer end
36	2	3	4	5	
	Jüri Jaanson Two Bridges Run				
	Estonian food month			+1 more	+2 more
37	9	10	11	12	

Date	Location	Website
9-11	Kõro dravaru un 30.000 sēklu "Mara mīļotāji" līdžu izveidāšana uz Jūrmalu	Pērņane
14-15	Prig jālasas ceļotājiem sarunātais "Marja"	Ziemeļu pieredze Marja
15	Poeta Indriķis	Poeta Indriķis
21	Sveicināta, Pērņane, vestari	Pērņane
21	Viesnis Saigānē	Kocenas jūrvidē
21	Saigānē, Saigānē, Saigānē	Jūrmala
22	Pērņane aprīša maršruts par godu izveidāšanai	Pērņane
22	Līgo svētku sākums	Engure
23	Līgo svētku sākums uz Druvasbāni	Rīga
23	Līgo svētku sākums uz Druvasbāni	Jūrmala

www.coastalhiking.eu

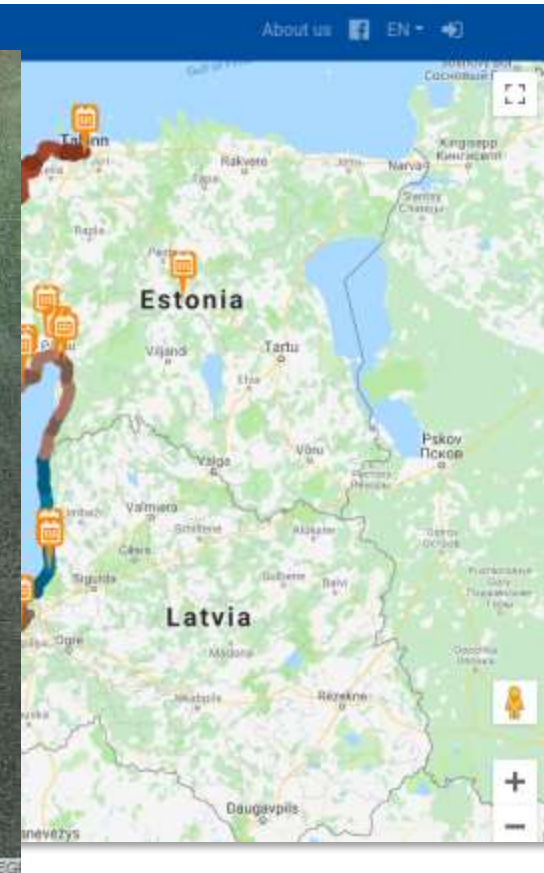
Open Street Map & Gogle maps use for coastalhiking.eu



Open Street



Google Maps



Hiking Waymarked Trails (Open Street Map data)



Waymarked Trails: Hiking

Last update: 9/2/2019, 1:36:02 PM

Map data © OpenStreetMap under ODbL elevation



relation 1254604

E9 European walking route E9

Show on map GPX KML

Cabo de São Vicente (PT) - West Coast of Spain - Le Havre (FR) - Calais (FR) - Bruges (BE) - Rotterdam (NL) - Hamburg (DE) - Stralsund (DE) - Gdańsk (PL) - border PL/RU - Narva-Jõesuu (EE)

Mapped length: 6365 km
Official length: 5200 km
Operator: European Ramblers Association

Wikipedia

Elevation profile

Sections

- European long distance path E9 - part alternative Great Bri...
- European long distance path E9 - part Belgium
- European long distance path E9 - part Estonia
- European long distance path E9 - part France
- European long distance path E9 - part Germany
- European long distance path E9 / International coastal route - part Germany
- European long distance path E9 - part Latvia
- European long distance path E9 - part Poland
- European long distance path E9 - part Spain
- European walking route E9 - Nederland

OpenStreetMap tags

contact:website	http://www.era-ewv-ferp.com/index.php?topmenu_id
description	Cabo de São Vicente (PT) - West Coast of Spain - Le Havre (FR) - Calais (FR) - Bruges (BE) - Rotterdam (NL) - Hamburg (DE) - Stralsund (DE) - Gdańsk (PL) - border PL/RU - Narva-Jõesuu (EE)
distance	5200
name	Chemin de randonnée Européen E9

Open Street Map



OpenStreetMap

Edit History Export

GPS Traces User Diaries Copyright Help About

Search

Where is this?

Go



Relation: d30 European long distance path E9 - part Latvia (9965036)

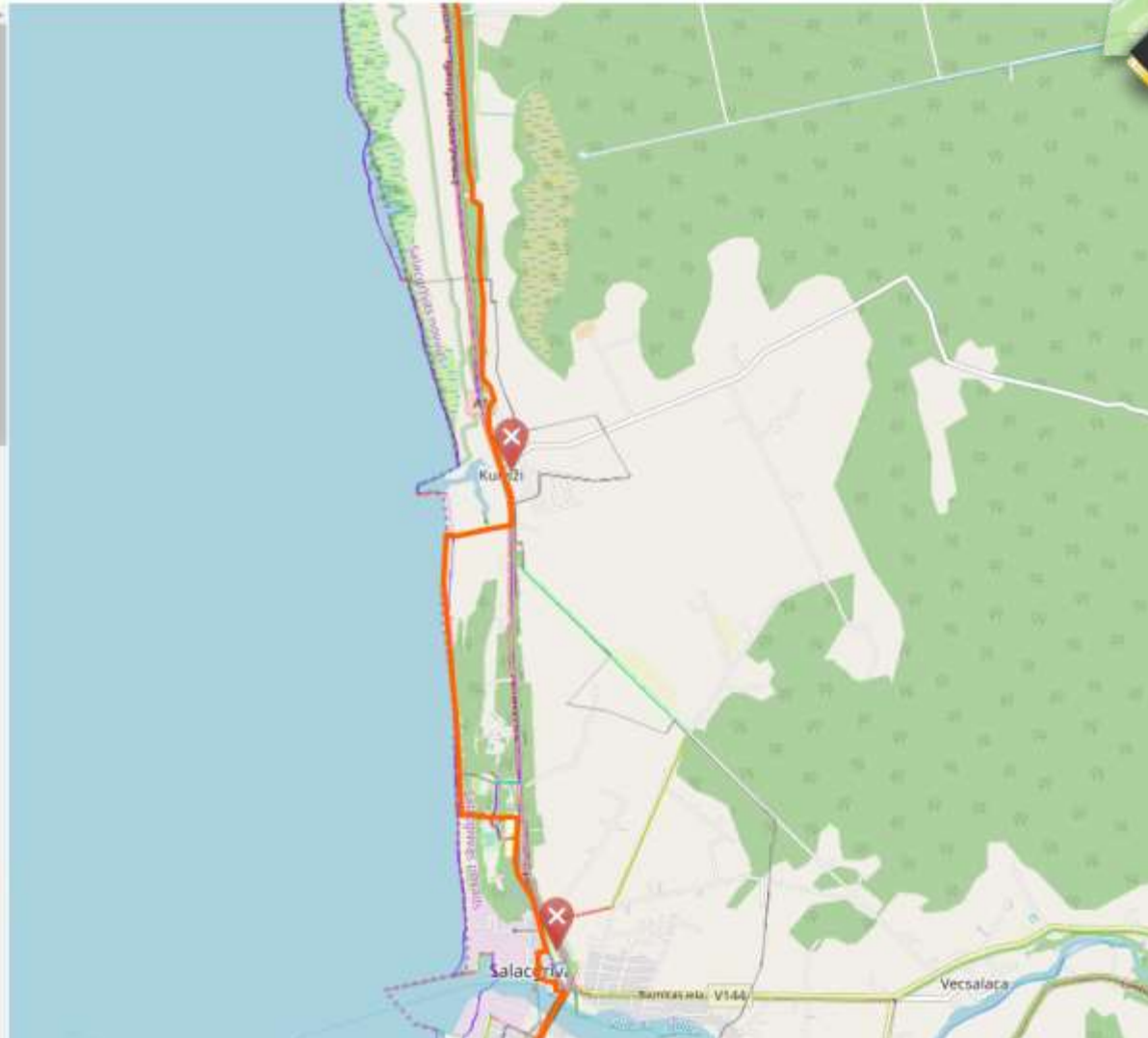
add the remainder of d30 for Jūrtaka; some sat tracing, way connectivity fixing and other minor improvements

Edited 6 days ago by richlv

Version #3 - Changeset #73806837

Tags

description	day30_Svētciems - Ainaži
name	d30_Europa Jūrtaka E9, Latvia
name:de	Europäischer Fernwanderweg E9, Latvia
name:en	d30 European long distance path E9 - part Latvia
name:et	Euroopa matkarada E9, Lätti
name:nl	Europese wandelroute E9, Latvia
name:pl	Europejski długodystansowy szlak pieszy E9 - część Latvia



Social Networks



Pārgājienu maršruts gar Latvijas un Igaunijas piekrasti
@jurtaka

Sākums

Ieraksti

Atsauksmes

Video

Attēli

Par lapu

Pasākumi

Kopiena

Izcelt

Visit Ad Center

Patik Tu seko Dalies

sākumpunktu?

Patik · Atbildēt · Ziņojums · 5 d.



Pārgājienu maršruts gar Latvijas un Igaunijas piekrasti

Publicēja Aija Neilande [?] · 30. augusts plkst. 15:53

Jūrtakas 11. diena, posms Staldzene - Oviši vēl vasarīgās noskaņās. Ar interesi gaidām rudenī, kad šis pats posms izskatīsies pavisam savādāk.



Raimonds Rāts

30. augusts plkst. 15:38

1330

People Reached

128

Engagements



Ranniku matkarada

@rannikumatkarada

Sākums

Ieraksti

Atsauksmes

Video

Attēli

Par lapu

Kopiena

Pasākumi

Izveidot lapu

Patik Tu seko Dalies

Ieraksti



Ranniku matkarada

11 h

Matkāta saab väga oduka! ka siis, kui valjas-on juba hāmaraks lāinud. Erti āge on see veel siis, kui kaasas suurepārase jutuga gid ja taekonda valgustāmas laternad. Eline laternatega matk Rooslepast Dirhamisse jutustas nā rannarootelaste ehulust kui mātāarpārandist, seikka teisi lōbusaid ja pōnevaid seiku. Aitāh osalejatele ja Laternamatkad. Ranniku matkarada ootab avastāma. lisa leiab www.coastalhiking.eu

Tõnis Krikk. Photography

#rannikumatkarada #coastalhiking #jurtaka #estlat #laternamatkad
Skatrit fotojumu.



Ja un vēl 38 fotojāņi

2 ierakstāņi dalījās



Jurtakas ga...



Kurzeme

68 posts 398 followers 147 following

Jūrtaka

Pārgājienu maršruts gar Latvijas un Igaunijas piekrasti, kurā izveidots ar Interreg Igaunijas un Latvijas programmas un ERAF finansāļu atbalstu.
www.jurtaka.lv

POSTS TAGGED



celotajs.lv

Trade fairs – FI, EE, DE, LV



Public transport campaign within Jūrtaka

Gar jūru kājām pa Jūrtaku, uz jūru ar sabiedrisko transportu!

Autobuss un vilciens aizvedīs Gidz Priekules piejūras ceļā. Kas vēlas gar visu jūras krastu.

Īpaši Jūrtakas laikā, izlaidis braucieni un doties piedzīvot Jūrtakas vilniņus!

Apceļo Latviju ar sabiedrisko transportu!

JŪRTAKA

VIENAS DIENAS MARŠRŪTI

JŪRTAKA

DIVU DIENU MARŠRŪTI

16. diena

KOLKA – ĢĪP

PIEZĪMES:
Jāiet uz 16. dienas sākuma punktu, tas pievieno papildus 2,9km jau esošajam 24km. Var arī doties uz jūru taisnā ceļā, tas atbilsts samazinās pa 2,9km.

4. diena
5. diena

LIEPĀJA – ZIEMUPE – PĀVILOSTA

PIEZĪMES:
Liepāja sākumpunkts Ziemeļmols uz Kuršu ceļā var reāli pasliktināt tālā ar autobusu, ar kļūm sām. Pārvietot autobusa pieturu pie galamērķa. Naktviltu iespēja atrodama pie abu dienu pakāpojumu sākajām.

TRANSPORTS:
Piekabenas vakarā ar vilcienu uz Liepāju, izlīdēt ar autobusu pārceļoties Pāvilosta-Ventspils Ventspils-Rīga, tālu ar nosacījumu ka Rīgas reiss pagaida, kamēr pienāk Ventspils reiss, jo pienāk vienkārši ar autobusu izstānu uz Rīgu.

43km

17. diena

ĢĪPKA – KALNE

PIEZĪMES:
Ābes galapunkts autobuss pietur tuvu maršrutam, pilnā posmā.

15. diena
16. diena

SAUNAGS – KOLKA – ĢĪPKA

PIEZĪMES:
Saunagā autobuss pietur apmēram 1,5km no centra Ģīpkā autobusa pietur tuvu galamērķam. Naktviltu iespēja atrodama pie abu dienu pakāpojumu sākajām.

TRANSPORTS:
Uz SAUNAGU
Autobuss: Rīgas SAO-Mazārtas (pieturvieta Saunagā) pietur. 7:30.
No ĢĪPKAS
Autobuss: Kalne-Rīgas SAO (pieturvieta Ģīpkā) pietur. 17:50.
1188.lv

37km

18. diena

KALTENE – MĒRSRAGS

PIEZĪMES:
Ābes galapunkts autobuss pietur tuvu maršrutam, pilnā posmā.

18. diena
19. diena

KALTENE – MĒRSRAGS – ENGURE

PIEZĪMES:
Kaltēnē autobuss pietur tuvu

TRANSPORTS:
Uz **KALTENI**

46km

Media work

Pilnais raksts atrodams šīs dienas Dienas Bizness laikrakstā.



DB LV
Ļemīs taku piejūras uzņēmējdarbībā

Šovasar atklāts garās distances pārgājienu maršruts gar Baltijas jūras...



MAMMAMUNTETIEM.LV

Pārgājiens kafijas un antidepresantu vietā. Kāpēc iet un kur meklēt labākos Latvijas pārgājienu maršrutus

Ceļojums pa Latvijas robežu zirga mugurā - Lettland umrunden zu Pferde



rtiņš Zilgalvis / F64 Photo Agency



trs miljons soļu gar Bal
ti populāri galamērķi ir bijuši

Ranniku matkarada
24. jūlijs

Mida vōiks teada enne kui Ranniku matkarajale minna?
Matkamine peaks olema ohutu nii sulle kui ka loodusele!
Skatit tulkojumu



PUIKAEESTIS.EE

Ranniku matkarada on 1200 kilomeetrit imelisi elamusi!
Piki Läänemere rannikut kulgev Ranniku matkarada on osa Euroopa...

How is the Baltic Coastal Hiking trail:



Social



Tasty



BALTIC
COASTAL
HIKING



Rough



Romantic



Surprising



BALTIC
COASTAL
HIKING



Mysterious



Versatile




Emotional



Pet and kids friendly



New initiatives for long distance hiking trails in the Baltics




BALTIC FOREST HIKING

FOREST TRAIL

long-distance forest hiking trail in Latvia and Estonia

The Forest Trail is a long-distance hiking route from Riga, Latvia, to Tallinn, Estonia, passing through the most afforested territories in both countries. The route is split up into approximately 50 one-day routes, each of them around 20 kilometres long. Some of the routes are more difficult than others, so please choose the ones that are most appropriate for you. The Forest Trail is planned as part of the E11 European long-distance hiking path.



LATVIA / ESTONIA



EUROPEAN UNION
European Regional Development Fund



Interreg
Central Baltic

Missing e-path sections - out for projects!



So the hike continuous!!!





celotajs.lv

This presentation reflects the views of the author. The managing authority of the programme is not liable for how this information may be used.

Asnāte Ziemele
Ph. +371 29285756
asnate@celotajs.lv

Latvijas lauku tūrisma asociācija "Lauku ceļotājs"

Kalnciema iela 40, Rīga, LV-1046, +371 67617600

E-pasts: lauku@celotajs.lv Facebook: Lauku Celotajs twitter.com/Laukucelotajs