



Experience from Italy: «Via Romea Sanese Accessibile»

When a cultural route meets social Inclusion



Agenda

- **Something About me**
- «Via Romea Sanese» – The Cultural Route
- The Project Framework - Methodology
- “Via Romea Sanese Accessible” – The route becoming accessible
- The FIE national project & Understanding the equipment
- Moments of Social Inclusion (Photo Gallery)
- Q&A

Angelo M.Latorre PMP®, Staff Manager in MPS –Volunteer of PMI
Branch-Toscana

IT-Programmer		IT-Analyst		Business Analyst		IT Project Manager (Finance & Treasury)	
1989	1994	1995	2000	2001	2009	2010	2023

...

In 34 working years I've learned that:

- Technical Competences can be bought easily in «the market» and are not rare....otherwise functional competences.
- Long Life Learning should be an objective to focus on, ever.
- Emotional and relational competences are the main tool to exploit effectively professional skills.
- Volunteering in PMI is a good opportunity to stay connected with the professional network in and out of your company.



Something about me in a private life

At national Level:

- Member of the National Board of FIE (Federazione Italiana Escursionismo - Italian Hiking Federation)
- President of the FIE committee of the Tuscany region.
- **National Commissioner for Trails Network and Cultural Routes**

In Europe – With the European Ramblers Association:

- 3rd Vice President of European Ramblers Association
- Chairman of the Walk-Leader Program
- Inspector of the Quality System LQT-Best of Europe – Day Walk.

You can get in contact with me:

Calling +39 335 871 0598

Writing to angelomichele.latorre@era-ewv-ferp.com



Agenda

- Something About me
- «Via Romea Sanese» – The Cultural Route
- The Project Framework - Methodology
- “Via Romea Sanese Accessible” – The route becoming accessible
- The FIE national project & Understanding the equipment
- Moments of Social Inclusion (Photo Gallery)
- Q&A



VIA ROMEA
SANESE
ACCESSIBILE

“Vie Romee” , “Via Francigena” and “Via Romea Sanese”



In the Middle Ages, the roads that pilgrims travelled to Rome, the city that constituted one of the main destinations, along with Jerusalem and Santiago de Compostela, of western Christianity, were called «Vie Romee» (or «Vie Romane» or «Vie Romipete»).

These roads could be regarded as motorways, connected by a network of generally more direct minor roads.

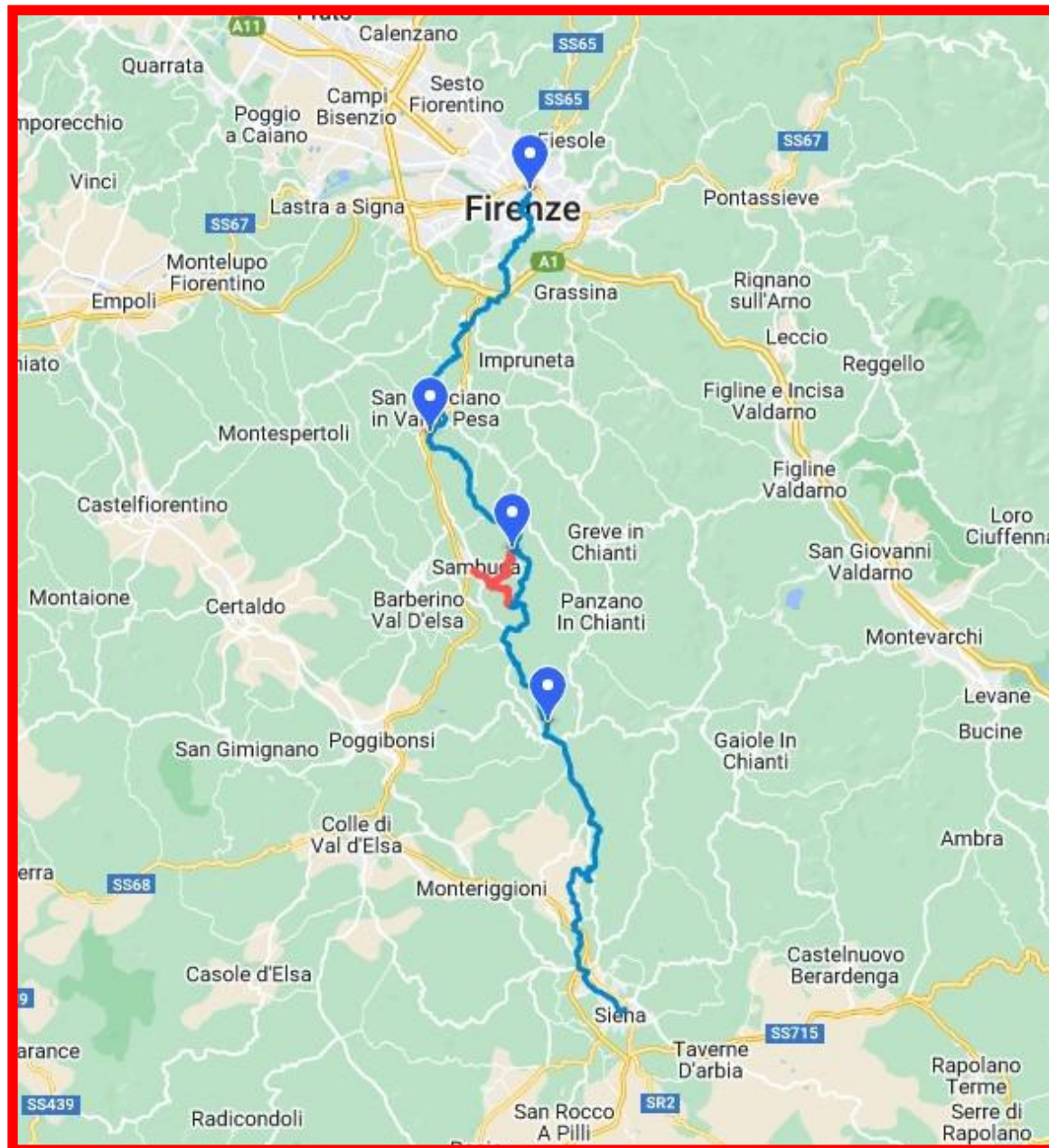
One of these was the road connecting Florence with Siena, the access point to the important “Via Francigena”.

The direct connection between Florence and Siena was known by the name “Via Sanese”, hence the present name “Via Romea Sanese”.



VIA ROMEA
SANESE
ACCESSIBILE

Overview on the "Via Romea Sanese"



Stage 1 From Florence to San Casciano in Val di Pesa

Length: 22 km

Duration: 6h

descent: 482 m

ascent: 739

Stage 2 From San Casciano in Val di Pesa to Badia a Passignano

Length: 15,4 km

Duration: 4 h

descent: 300 m

ascent: 330

Stage 3 From Badia a Passignano to Castellina in Chianti

Length: 21,1 km

Duration: 6h

descent: 530 m

ascent: 760

Stage 4 From Castellina in Chianti to Siena

Length: 25 km

Duration: 6:30 h

descent: 625 m

ascent: 381















Agenda

- Something About me
- «Via Romea Sanese» – The Cultural Route
- The Project Framework - Methodology
- “Via Romea Sanese Accessible” – The route becoming accessible
- The FIE national project & Understanding the equipment
- Moments of Social Inclusion (Photo Gallery)
- Q&A



VIA ROMEA
SANESE
ACCESSIBILE

Which Project Framework?



Speaking of principles and methodologies for the exploitation of tourism for economic growth, in particular of tourism linked to hiking and therefore to the network of trails, a big help can come from Europe, in particular from the notebooks published by:

- the «Liason Entre Actions De Development de l'Economie Rurale»
- and the «Commission Europeenne - Direction Generale de L'Agriculture».

In this presentation I will highlight just a few aspects, those that make the «Via Romea Sanese Accessible» project a best practice to be imitated.



VIA ROMEA
SANESE
ACCESSIBILE

Assessing the territory's tourism potential (SWOT)

Strength

Tourism can be an engine of local development in many rural areas

Weaknesses

It would be wrong to see tourism as the only possible alternative to declining economic activities

Opportunities

It is necessary to assess the real potential for tourism development to justify new investments

Threats

Disastrous effects of excessively large projects, the absence of an original offer, the misunderstanding of customers

LEADER Network



LIAISON ENTRE ACTIONS
DE DÉVELOPPEMENT
DE L'ÉCONOMIE RURALE
LINKS BETWEEN ACTIONS
FOR THE DEVELOPMENT
OF THE RURAL ECONOMY



COMMISSION EUROPÉENNE
DIRECTION GÉNÉRALE
DE L'AGRICULTURE

EUROPEAN COMMISSION
DIRECTORATE-GENERAL
AGRICULTURE

Assessing the territory's tourism potential (the process)



LIAISON ENTRE ACTIONS
DE DÉVELOPPEMENT
DE L'ÉCONOMIE RURALE
LINKS BETWEEN ACTIONS
FOR THE DEVELOPMENT
OF THE RURAL ECONOMY

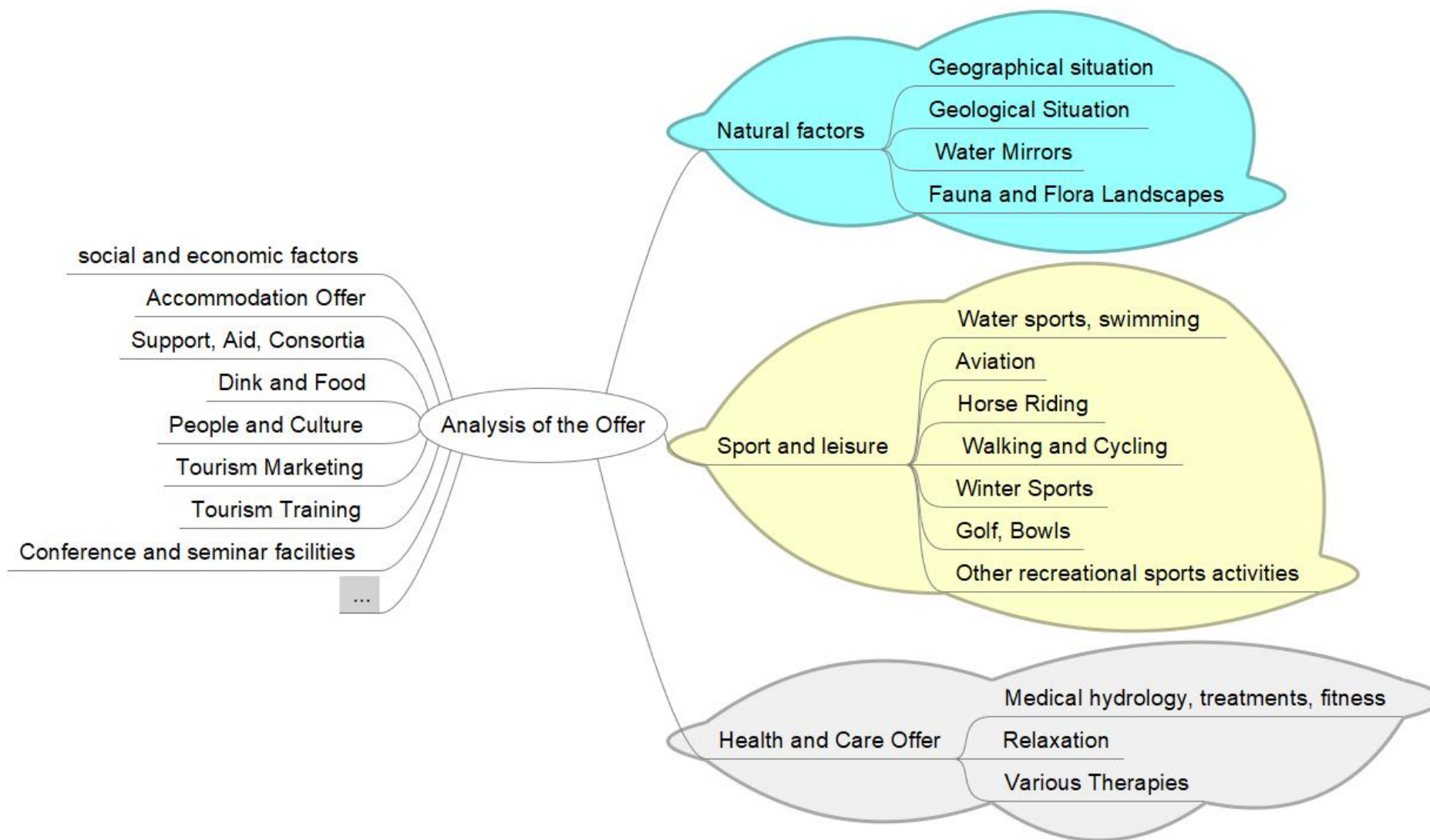


COMMISSION EUROPÉENNE
DIRECTION GÉNÉRALE
DE L'AGRICULTURE
EUROPEAN COMMISSION
DIRECTORATE-GENERAL
AGRICULTURE



VIA ROMEA
SANESE
ACCESSIBILE

Assessing the territory's tourism potential (Offer Analysis Mindset)



LEADER Network



LIAISON ENTRE ACTIONS
DE DÉVELOPPEMENT
DE L'ÉCONOMIE RURALE
LINKS BETWEEN ACTIONS
FOR THE DEVELOPMENT
OF THE RURAL ECONOMY



COMMISSION EUROPÉENNE
DIRECTION GÉNÉRALE
DE L'AGRICULTURE

EUROPEAN COMMISSION
DIRECTORATE-GENERAL
AGRICULTURE



Agenda

- Something About me
- «Via Romea Sanese» – The Cultural Route
- The Project Framework - Methodology
- “Via Romea Sanese Accessible” – The route becoming accessible
- The FIE national project & Understanding the equipment
- Moments of Social Inclusion (Photo Gallery)
- Q&A

Methodology Principles become the project objectives (Pillars)

Make use of the "Via Romea Sanese" in terms of hiking, promoting the culture of the territory and all the identity characteristics it includes, such as: **biodiversity, history, traditions and enogastronomic peculiarities.**

The keystone on which the entire project rests consists in allowing this enjoyment to certain fragile categories, in particular users with motor difficulties, thanks to the adoption of specific equipment (physical and technological aids)

The cultural path already adopted by the Region of Tuscany and the academic world, the University of Florence in primis, has finally been the subject of a memorandum of understanding between the municipalities along the route. These entities are the nodes supporting a network of associations and stakeholders that will jointly carry out activities aimed at the differently abled.

To increase the resident population's interest in the cultural path, mainly by favouring initiatives aimed at environmental protection, inclusion and participation.

The above translates into the construction of an offer of hiking, sporting, didactic and recreational activities, aimed at all but especially at the inclusion of the disabled and the elderly, through the use of specific equipment and the establishment of easy itineraries (from 1 to 5 km) especially designed for this purposes.

The project sheet

Project Fundamentals 1

Funding body	 <p>Dipartimento per le Politiche Giovanili e il Servizio Civile Universale Presidenza del Consiglio dei Ministri</p> <p>Project funded under the 2019 Call for Proposal named “Fermenti” by the “Dipartimento per le Politiche Giovanili ed il Servizio Civile Universale – Presidenza Consiglio dei Ministri” (Department for Youth Policy and Universal Civil Service - Presidency of the Council of Ministers)</p>
Funding Required	100.000,00€
Project Duration in Months	18 months
Project Proponents	<ul style="list-style-type: none"> • Vito De Meo • Elena Bernini • Antonio Mori
Project Team	<ul style="list-style-type: none"> • Vito De Meo, 32 years old, project manager and general contact person • Elena Bernini, 32 years old, co-advisor of the general contact person • Antonio Turrisi, 30 years old, marketing and media professional • Martino Dainelli, 35 years old, environmental hiking guide • Antonio Menguzzo, 60+ years old, project consultant, expert in planning, business management and land development

The project sheet

Project Fundamentals 2

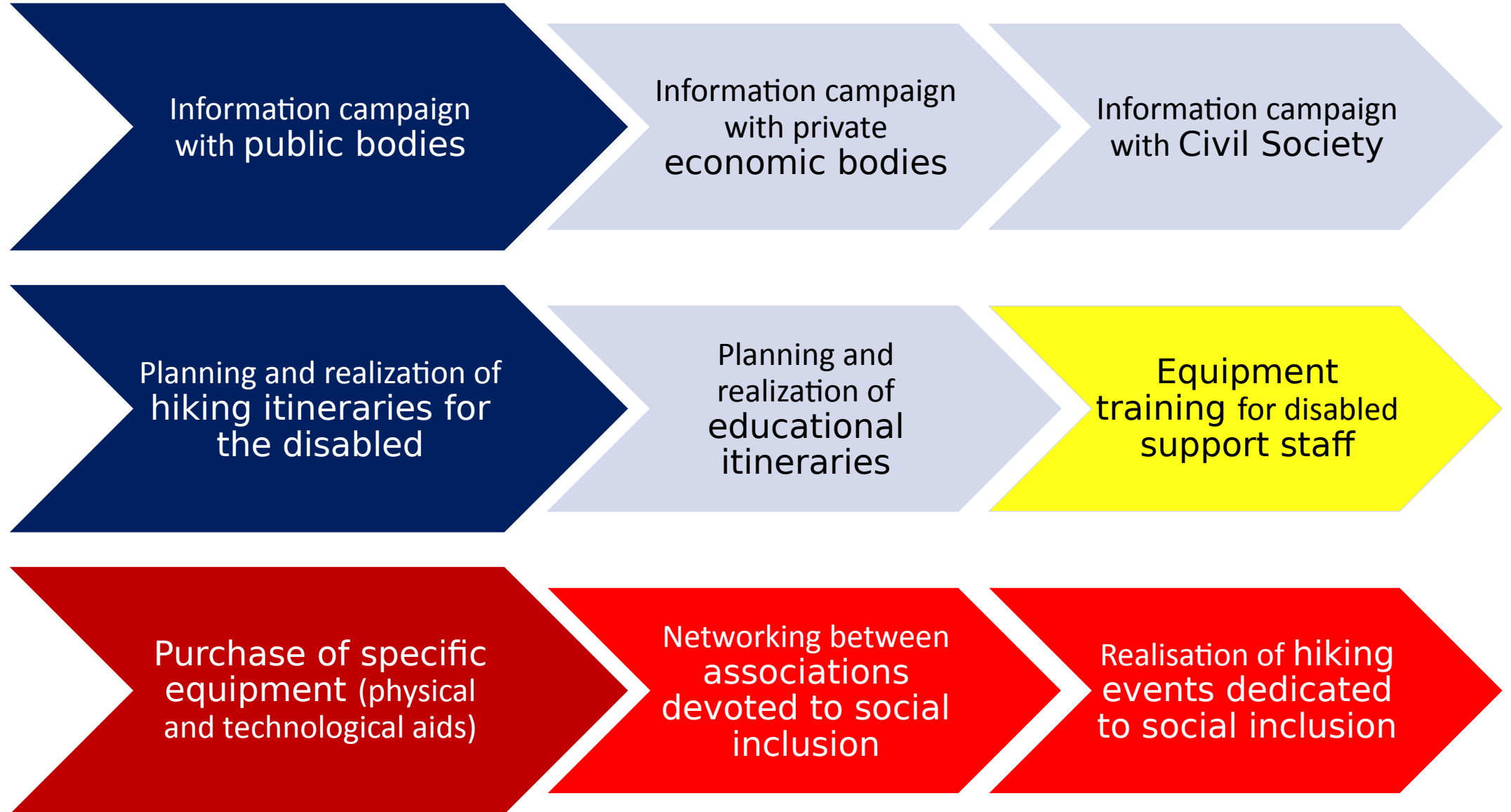
Stakeholders

- Tuscany Region
- Municipalities present on the route
- Hospitalities
- Sports and Hiking associations
- Universities
- Farms and agri-tourism companies
- Local environmental hiking guides
- Economic Operators (shops, restaurants, artisans)

Networking at project starting

- **Associazioni affiliate FIE**– Associations affiliated with the Italian Hiking Federation
- **Misericordia** - Public Assistance and First Aid Association
- **La Racchetta** - Civil and environmental protection association
- **Gruppo Archeologico Salingolpe** - Cultural and Archaeological Association
- **Centro Commerciale Naturale** - Association of economic operators in the municipality of Castellina in Chianti

Core activities of the project



The current network of the project after the information Campaign

Information campaign with
public bodies

European and National Public Bodies (#02)



Municipalities (#10)



Barberino

Castellina in
Chianti

Castelnuovo
Berardenga

Firenze

Impruneta

Monteriggioni

Poggibonsi

Radda in
Chianti

San Casciano
Val di Pesa

Siena

The current network of the project after the information Campaign

Information campaign
with Civil Society

Information campaign
with private
economic bodies

Federations and associations dedicated to social inclusion (#11)



Cutural and Economic Operatores (#15)



Some of these individuals were operational resources of the project, for reasons of time we will not talk about their factual contribution, which will however be provided, as an annex, at the end of this presentation.

The Possibility for them to participate as partner in European projects is specified

The specific equipment purchased

Purchase of specific equipment (physical and technological aids)

Type of Aid	#	Description	Cost
Technological	1	Personal Computer and software	3.386,00€
	1	Gps Tracker Garmin	
Phisical	3	«Easytrek» for kids	3.000,00€
	7	Joelettes and accessories	33.613.10€
	2	Professional electric motors adaptable to wheelchairs	
Total (max 40% of total budget)			40.000,00€



Agenda

- Something About me
- «Via Romea Sanese» – The Cultural Route
- The Project Framework - Methodology
- “Via Romea Sanese Accessible” – The route becoming accessible
- The FIE national project & Understanding the equipment
- Moments of Social Inclusion (Photo Gallery)
- Q&A



The FIE National Project - The Graphics





The FIE national project - The Mission



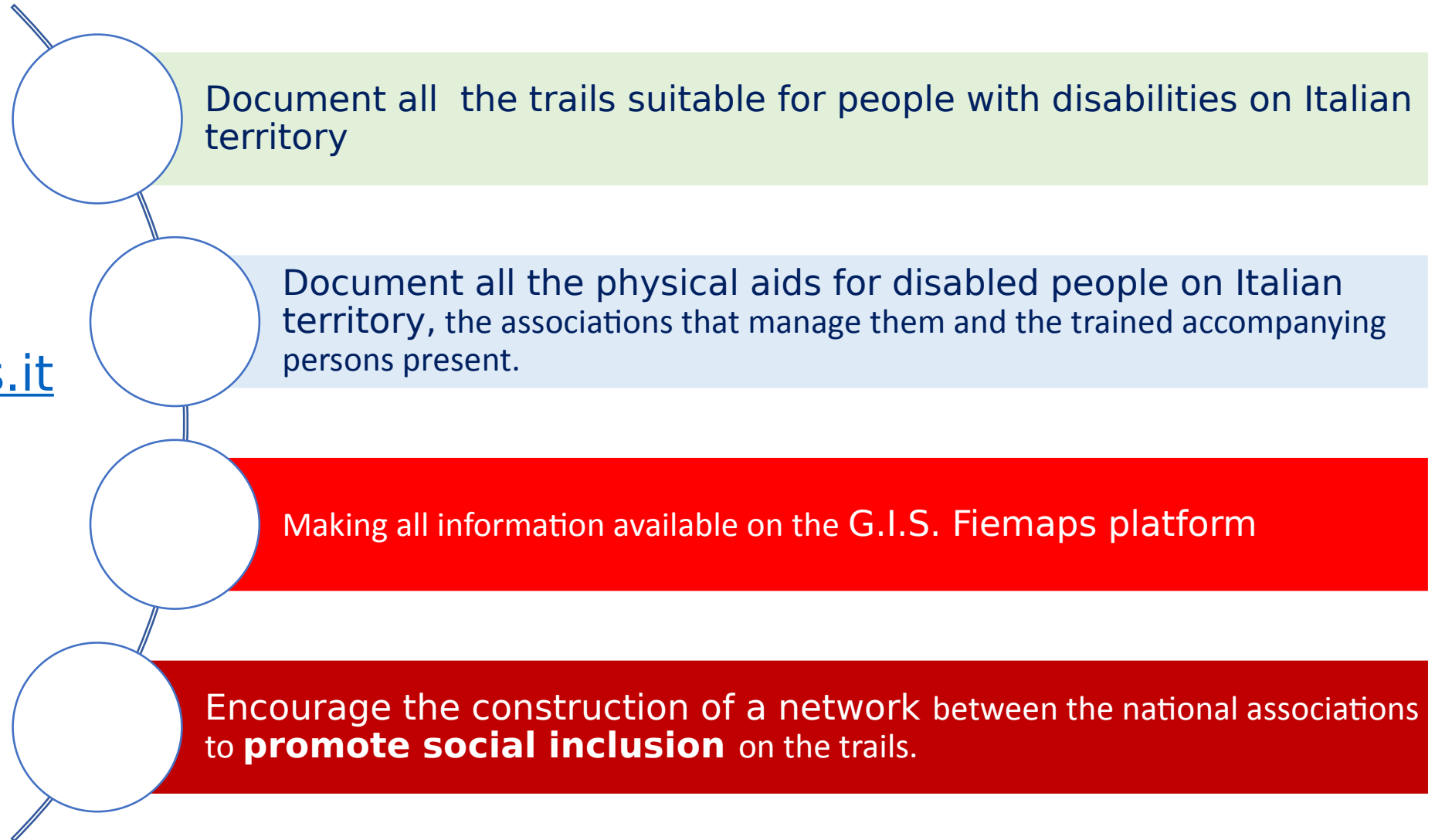
The development goals should be aimed at everyone, regardless of their physical condition.



The national F.I.E. project - The Core Activities “Pillars”



<https://fiemaps.it>





The national F.I.E. project - The GIS Platform



Lingua it

Federazione Italiana Escursionistica

Q Ricerca

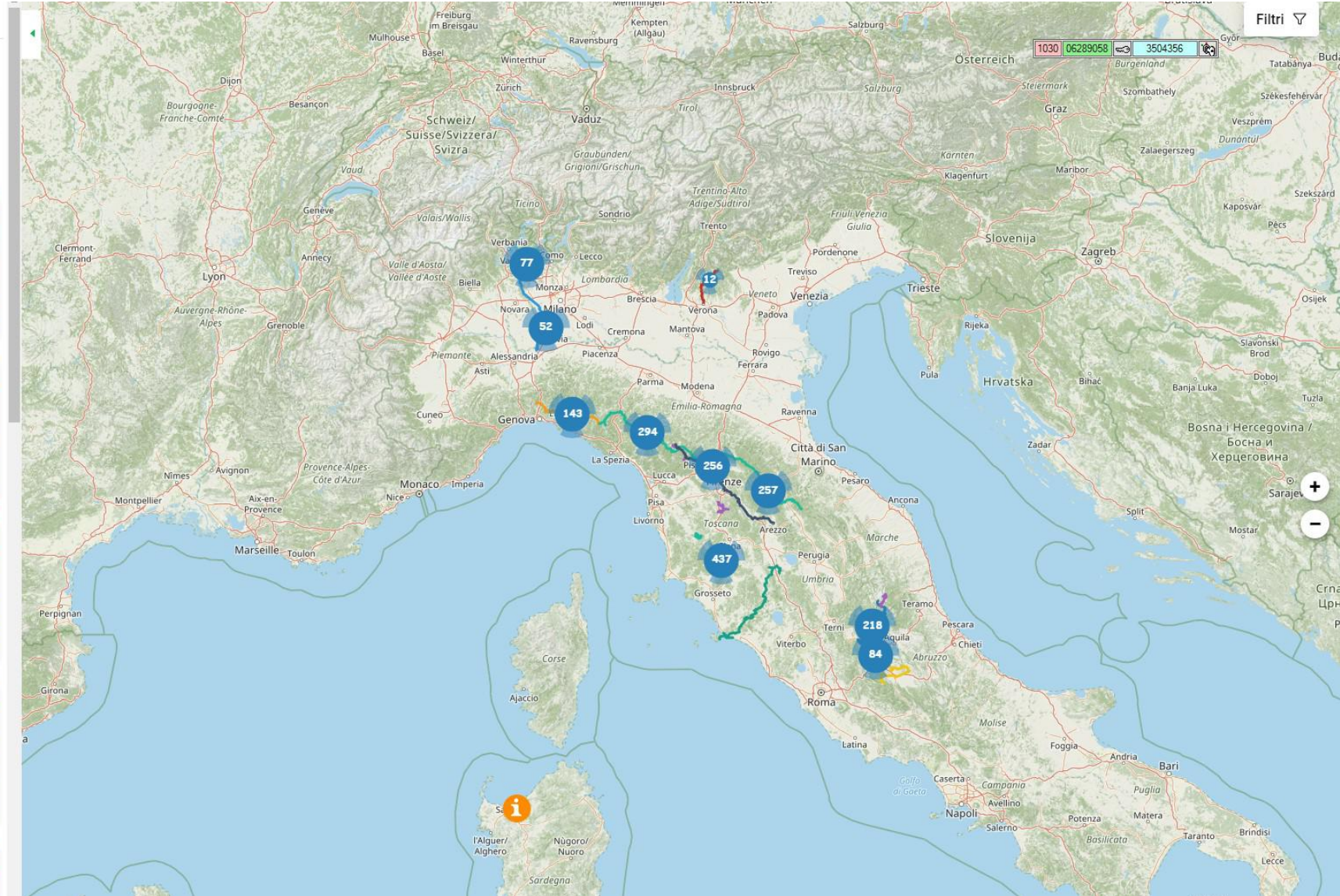
FIEMAPS

E1 Lombardia

E1 Liguria

E1 Toscana

E1 Marche



<https://fiemaps.it>



Italian Alpine Club classification (CAI) of mountain trails accessible with aids

We have to make sure that people with disabilities can enjoy the trails as we do, which means having to classify them to show the degrees of difficulty and the physical aids needed (whether accompanied or independent).

This is helped by the classification system designed by the C.A.I. Italian Alpine Club, which identifies three different degrees of difficulty.

Grade	Description	Technical data
AT – ACCESSIBILI TURISTICI (Accessible tourism)	This route is also accessible by wheelchair with a motor car, It is not, however, recommended to travel in perfect autonomy.	Routes on dirt tracks, gravel tracks, grassy tractors are characterised by: <ul style="list-style-type: none">• moderate gradients < 8%• width > 1.5 m• moderate elevation difference < 150 metres• length < 3 km Have a generally even and smooth surface without : <ul style="list-style-type: none">• artificial or natural steps• exposed points• sharp bends that could make manoeuvres difficult



Italian Alpine Club classification (CAI) of mountain trails accessible with aids

Grade	Description	Technical data
AE – ACCESSIBILI ESCURSIONISTI (accessible for hikers)	Need for an off-road device and almost 2 companions for each disable person.	Routes on well visible paved paths and mule tracks. They are characterised by: <ul style="list-style-type: none">• moderate gradients <16%• width >1m and <1,5m• elevation difference < 300m• length 3 to 6 km• rough terrain,• few and/or modest artificial or natural steps easily overcome by an off-road device absence of: <ul style="list-style-type: none">• major obstacles• exposed spots• sharp bends that could make manoeuvres difficult.



Italian Alpine Club classification (CAI) of mountain trails accessible with aids


Grade	Description	Technical data
AEE – ACCESSIBILI ESCURSIONISTI ESPERTI (accessible for expert hikers)	Necessity of an off-road device and a large group of support persons , such that it can overcome points characterised by a high degree of criticality and to guarantee a change in the driving of the device.	Routes on mule tracks and paths with passing traces in varied terrain. They are characterised by some sections with : <ul style="list-style-type: none">• gradients of even > 16%• widths of less than 1m,• elevation differences > 300 m• length > 6 km, Possible presence of: <ul style="list-style-type: none">• rough terrain in places leading to forced passage• natural or artificial steps of more than 10 cm• major obstacles, exposed points and or bends

Once the trails have been classified, it is possible to present the different physical aids available, for hiking by disabled people, whether accompanied or independent.



DUETTO

Product Overview

Manufacturer	
Web Site	https://www.sanort.com/
Cost	6.000,00€ (6k)
Description	The aid combines a bicycle with a wheelchair and allows the front-seat disabled person to capture and experience the emotions of an excursion as a protagonist, and the accompanying person to no longer place limits on the choice of routes.
Main advantage	easy and smooth to pedal and handle, Duetto can also transform into a walking wheelchair once you reach your destination for a pleasant cycling trip.
Training	The guide book is enough
Limit of Usage	Usefull in bike-friendly city – In some AT trails could raise some issues.

Specific equipment for accessible trails “K-Bike” and “Easy-trekking”




K-BIKE



Easy Trekking (for kids)

Product Overview

Manufacturer	 OFFCARR
Web Site	https://www.offcarr.com
Cost	$\geq 1.500,00\text{€}$ and $\leq 4.000,00\text{€}$
Description	K-BIKE is an adult hiking aid, while EASYTREKKING is designed for children or people with very slim builds.
Main advantage	K-BIKE's two wheels make the wheelchair stable and easy to steer
Training	A training is recommended however it is easier to use than a single-wheeled wheelchair.
Limit of Usage	Suitable for AT trails and the simpler AE trails



Specific equipment for accessible trails The “Joelette”



Product Overview

Manufacturer

Joëlette and Co

Web Site

<https://www.joeletteandco.com>

Cost

>= 3.700,00€ and <= 7.000,00€

Accessories are sold separately and some are necessary as well as expensive.

Description

The Joëlette is a one-wheel off-road wheelchair that allows any disabled person to go hiking with the help of at least two companions. With friends or family, share unique moments, from a simple walk to a sporting challenge. The accessories are sold apart.

Main advantage

It is very transportable, light despite its stability and robustness. The single shock-absorbing wheel, make it able to easily overcome steps, natural and otherwise, and make it suitable for even the most demanding trails.

Training

A training is highly recommended especially to fully exploit the on walk levelling and break in difficult conditions.

Limit of Usage

Suitable for all the Accessible Trails Rate (AT, AE, AEE)




Specific equipment for accessible trails “Joelette”



Specific equipment for accessible trails The “Triride” Project



Product Overview

Manufacturer	
Web Site	https://www.trirideitalia.com/power-device/
Cost	$\geq 3.500,00\text{€}$ and $\leq 8.000,00\text{€}$
Description	Triride is a specialist in the construction of wheelchairs for sport and intensive use. These aids are designed to seek the autonomy of the disabled person,
Main advantage	the different motorisations develop movement via front-wheel drive, reusing one's own wheelchair, or via all-wheel drive, on special wheelchairs, allowing demanding excursions even on their own. (However it is preferable to have companions as well as in common Hiking).
Training	A training is recommended to fully exploit the motorization features.
Limit of Usage	Is suitable for AT end some AE trails in full autonomy.



The Triride Project – capabilities of the all-wheel-drive





A hiking in Livigno, with MTW- Trekking





Agenda

- Something About me
- «Via Romea Sanese» – The Cultural Route
- The Project Framework - Methodology
- “Via Romea Sanese Accessible” – The route becoming accessible
- The FIE national project & Understanding the equipment
- Moments of Social Inclusion (Photo Gallery)
- Q&A



Moments of social inclusion Information Campaigns and Reharsal



VIA ROMEA
SANESE
ACCESSIBILE



Moments of social inclusion Educational Workshop

Moments of Social Inclusion Groups



Moments of Social
Inclusion
HIKING!!!!



Via Romea Sanese Accessibile/



Dr. Vito De Meo

Via Romea Sanese Accessibile/



VIA ROMEA
SANESE
ACCESSIBILE



Via Romea Sanese Accessibile/





VIA ROMEA
SANESE
ACCESSIBILE





VIA ROMEA
SANESE
ACCESSIBILE





VIA ROMEA
SANESE
ACCESSIBILE





Special thanks to the 'Diversamente eroici' (Differently Heroic) the association of disabled people who fed us during the events



VIA ROMEA
SANESE
ACCESSIBILE



A special testimonial (1/2)



Please, let me introduce you to my friend Annemieke Goudsmit.

She was a great hiking and nature enthusiast.

She hiked the major European mountain ranges; in the picture the backdrop is the “Mount Snowdon” in Wales.

A special testimonial (2/2)

VIA ROME/
SANESE
ACCESSIBIL



Currently confined to a wheelchair, she is an activist for improving conditions for disabled people, removing architectural barriers and encouraging anything that will improve their lives.

Pictured here with her team at the Inclusion Europe conference.

I met her playing chess online, where she is a tenacious fighter just as she is in life.

We started talking about social inclusion, in particular how to make trails accessible to people like her, who still want to experience nature and the outdoors. I asked her if I could quote her in this presentation to clarify a concept that is particularly close to my heart:

Whether you were born disabled or have become disabled, you have the right to live as independently as possible. Working to increase social inclusion and remove architectural barriers is the duty of all people and all states that consider themselves civilised.

Q&A



Credits:

- Links between action for the development of the rural economy
- European Commission Directorate – General Agriculture
- Dr. Vito De Meo the ideator of «Via Sanese Accessibile»
- Visit Tuscany for Pictures and Technical information on Via Romea Sanese
- All the beautiful Association that works to make accessibility a Reality
- Via Romea Sanese Accessibile & Federazione Italiana Escursionismo

Contact Person: Vito De Meo

Telephone +39 328 019 4591

E-mail salingolpe@gmail.com



Name	Contribution
<p>Gruppo Archeologico Salingolpe odv</p> <p>Possibility to participate as partner in European projects</p>	<p>Support for the historical study phases of “Via Romea Sanese”, it helped understanding the cultural sites with the greatest identity and interest and providing cultural content to be distributed during hiking activities. In addition, together with Giampaolo Biagi, and in synergy with the other Biodiversity expert Dr. Martino Danielli, environmental guide and doctor of natural sciences, she took care of the distribution moments with in-depth focus on the knowledge of the native Black Rooster breed, a true emblem of the territory.</p> <p>The duration of the collaboration is equal to that of the project, while the individual distribution activities on the Rooster were carried out during the excursions on 1 April (Castellina), 6 May (Lornano-Trasqua), 17 June 2023 (San Donato in Poggio) and 3 September 2023 (annual event loc. Badiola)</p>

Annex: Network Important Contribution.

Contact Person: Daniele Bibbiani

Telephone

+39 348 656 4551

E-mail

segreteria@gruppotrekkingesenese.it



Name	Contribution
<p>Gruppo Trekking Senese APS</p> <p>Possibility to participate as partner in European projects</p>	<p>Affiliated with FIE (Federazione Italiana Escursionismo) helped us together with the regional and national FIE in the realization of further accessible hiking trails, qualified accompaniment with the Joelettes, and the co-planning of the annual event planned for 3 September plus all forms of organizational support for upcoming activities.</p> <p>They were essential in providing logistical support and accompaniment for the inclusive hike on 17 June 2023 in San Donato in Poggio and for the annual event held in the Badiola locality on 3 September. The duration of the relation began on 17 June 2023 and ended with the natural closure date of the project, 14 September 2023.</p>

Annex: Network Important Contribution.

Contact Person: Samantha

Telephone

+39 339 483 0840

E-mail

sentieridifelicita@gmail.com



Name	Contribution
<p>Associazione Sentieri di Felicità aps di Altopascio (Lucca)</p> <p>Possibility to participate as partner in European projects</p>	<p>Association of hiking and nature enthusiasts already sensitive to the topic of accessible hiking (among the first in Tuscany to have focused attention on the topic).</p> <p>It has shared, patronised and helped spread our project as well as actively participating in the annual event excursion on 3 September 2023, providing among other things its own off-road wheelchair. The duration of the relationship is until the natural end date of the project, 14 September 2023.</p>

Annex: Network Important Contribution.

Contact Person: Lorenzo Ruffoli

Telephone

+39 335 752 3582

E-mail

ass.diversamente.eroici@gmail.com



Name	Contribution
<p>Associazione Diversamente eroici APS</p> <p>Possibility to participate as partner in European projects</p>	<p>An association of young people with cognitive disabilities, which for the annual excursion event on 3 September directly took care of the refreshments at the end of the morning with its disabled youngsters in order to further promote the concretely inclusive nature of the initiative. The duration of the relationship is until the natural end date of the project, 14 September 2023.</p>



Name	Contribution
<p>Centro Commerciale Naturale di Castellina in Chianti (association of economic operators).</p>	<p>It patronised and shared the goodness of our project, sharing with its members the project's mission and helping us where necessary to identify any producers who could sponsor us with local products to be used during events (e.g. Vini Bucciarelli, Villa Trasqua, Antica Trattoria La Torre and La Bottega del Borgo di Castellina). The duration of the relationship is until the natural end date of the project, 14 September 2023.</p>



Name	Contribution
Association Musei a Colazione aps in Florence	Association specialized in guided tours of cultural sites. It shared and helped disseminate our project, as well as requesting our collaboration to conduct a guided tour of the Bardini Gardens in Florence that was also accessible to the disabled. It was held on the afternoon of 22 April 2023. The duration of the relationship is until the natural end date of the project, 14 September 2023.



Name	Contribution
Filiderba Aps Association of Florence	Association of families and young people with motor and cognitive disabilities. It has shared, sponsored and helped to disseminate our project as well as participating in both the inclusive excursion and the collateral experiential focuses on 1 April 2023 and the annual event on 3 September 2023. The duration of the relationship is until the natural end date of the project, 14 September 2023.

Name	Contribution
Futura Aps Association of Florence	Association of families and young people with motor and cognitive disabilities. It shared, patronized and helped disseminate our project as well as adhered to both the inclusive excursion and the collateral experiential focuses on 6 May 2023. The duration of the relationship is until the natural end date of the project, 14 September 2023.

Name	Contribution
La Melagrana Aps Association of Florence	Association of families and children with motor and cognitive disabilities. It shared, sponsored and contributed to the dissemination of our project as well as taking part in the inclusive excursion as well as in the experiential focus on the tradition of clay on 17 June 2023. It also took part in the project presentation day together with the boys of the Salesian Oratory of Scandicci as well as in the experiential focus on biodiversity on 5 May 2023. The duration of the relationship is until the natural end date of the project, 14 September 2023.



Name	Contribution
Associazione Ci Incontriamo aps di Barberino-Tavarnelle (FI)	Association of families and young people with motor and cognitive disabilities. It has shared, sponsored and helped disseminate our project as well as adhered to it and actively participated in the annual event excursion on 3 September 2023. The duration of the relationship is until the natural end date of the project, 14 September 2023.

Name	Contribution
Vagamonti aps Association of Prato	Association of hiking and nature enthusiasts already sensitive to the topic of accessible hiking, founded by Gianluca Mantovani, known for having led the Tour of Italy on foot despite being disabled himself with two autoimmune diseases. He has shared, patronised and helped to spread the word about our project, as well as actively participating in the annual event hike on 3 September 2023, including providing his own off-road wheelchair. The duration of the relationship is until the natural end date of the project, 14 September 2023.

Name	Contribution
Associazione Chianti Storico aps of Gaiole in Chianti (SI)	<p>Provided logistical support in organising the event-annual excursion scheduled for 3 September 2023 at loc. Badiola - Castellina in Chianti. This assistance consisted in welcoming participants, arranging vehicles (car parks), and assisting during the excursion to minimize the risks connected to any vehicular traffic along the route or during crossings. In addition to this, they assisted and assisted in driving and/or assembling/disassembling Joëlette wheelchairs in accordance with the organization and in assisting disabled persons present during stops for physiological needs (hygiene requirements). They managed the organisation of the re-enactment and refreshments through the involvement of other specialized associations. The duration of the relationship is until the natural end date of the project, 14 September 2023.</p>



Name	Contribution
Associations Agresto asp	On the occasion of the annual event excursion on 3 September, among the experiential activities for participants, they oversaw the historical re-enactment in medieval costumes in front of the ancient Badiola of S. Maria in Colle, capable of recounting, with actorly performance, the particular story of the 'rebellious nuns' excommunicated and then pardoned in the 13th century by the bishop of Arezzo on papal mandate. The duration of the relationship is until the natural end date of the project, 14 September 2023.

Name	Contribution
Associazione Viticoltori di Castellina in Chianti (SI)	An association that brings together all of the area's wine producers, which shared and supported our project, especially on the annual event on 3 September, awarding us a free supply of wine to make some of the area's most authoritative products better known to all participants. The duration of the relationship is until the natural end date of the project, 14 September 2023.



Name	Contribution
Azienda Agricola Marchesi Mazzei Spa	Owner of the property used for the annual event excursion on 3 September. We were granted the prestigious piece of rural architecture of the ancient monastery of S. Maria in Colle (11th century) known as La Badiola as the starting point for the annual event excursion as well as the venue for the historical re-enactment.

Name	Contribution
Confraternita di Misericordia della SS. Annunziata di Castellina in Chianti	An historic association founded in Chianti at the beginning of the 19th century with the aim of meeting the social welfare needs of the population. The Misericordia is collaborating with us both by sharing the project, disseminating its aims and possibilities for accessible hiking for its members, and by providing, free of charge, premises for the storage, assembly and use of the technical equipment necessary to allow the accessibility of hiking itineraries (Joelette for adults and “easytrekking” for children). The duration of the relationship is until the natural end date of the project, 14 September 2023.

Name	Contribution
Salesian Oratory in Scandicci (Florence)	Duration of the collaboration: 24 December 2022 to 14 September 2023. It has shared, sponsored and contributed to the dissemination of our project as well as taking part in the inclusive excursion and in the cultural in-depth study of the clay tradition on 17 June 2023 as well as taking part with the Oratory's young people in the project presentation day and in the biodiversity explanation on 5 May 2023. The duration of the relationship is until the natural end date of the project, 14 September 2023



VIA ROMEA
SANESE
ACCESSIBILE

Annex: Network Important Contribution.

Name	Contribution
Chiesa del SS. Salvatore di Castellina in Chianti	It helped us organise the annual event excursion by adhering to the project and disseminating it, as well as granting us free use of the parish premises where the excursion could end with refreshments and moments of study. The duration of the relationship is until the natural expiry date of the project, 14 September 2023